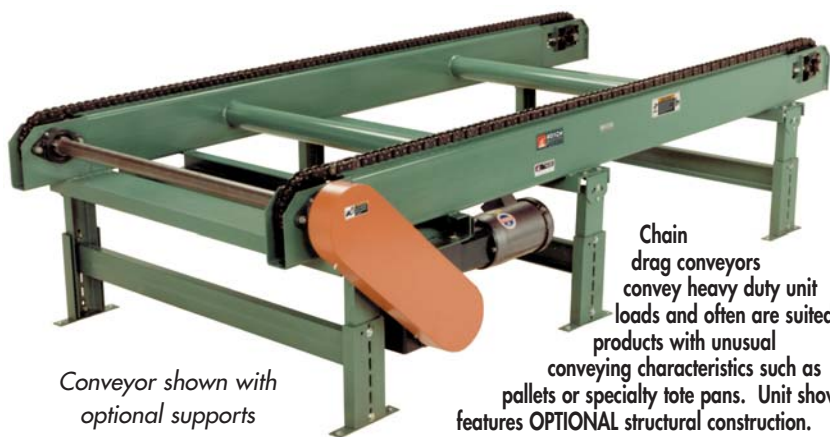
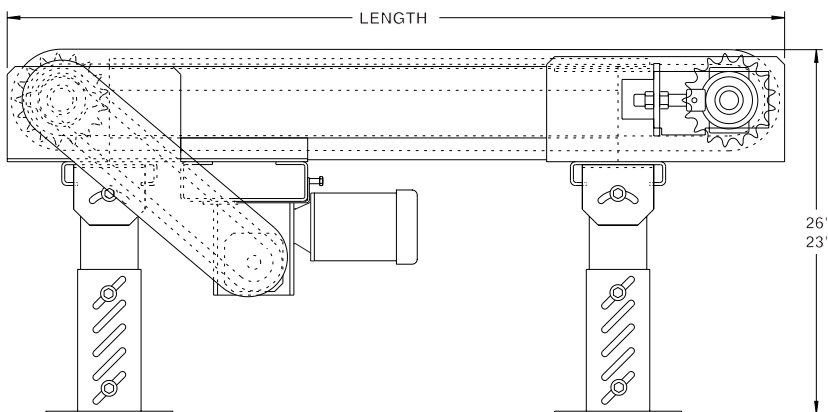
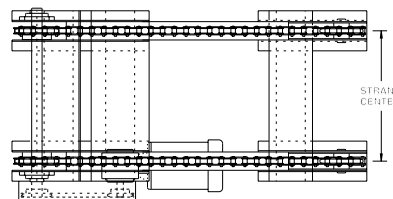


MODEL CD280 2-STRAND CHAIN DRAG CONVEYOR



Conveyor shown with optional supports

Chain drag conveyors convey heavy duty unit loads and often are suited for products with unusual conveying characteristics such as pallets or specialty tote pans. Unit shown features **OPTIONAL** structural construction.



LENGTH	WT. (lbs.)	LENGTH	WT. (lbs.)
3'	377	7'	484
4'	409	8'	516
5'	420	9'	548
6'	452	10'	580

SPECIFICATIONS

FRAME: 7 ga. formed boxed channel.

CARRIER CHAIN: No. 80 (model CD280) or no. 60 (model CD260) riveted roller chain.

WEAR STRIP: UHMW long lasting wear strip, upper and lower.

CHAIN CENTERS: 18"

CHAIN TAKE-UP: Screw type located at tail end.

END DRIVE: Allows one-direction (unit) operation; add optional center drive for reversible application.

CHAIN SPEED: 35 FPM constant.

BEARINGS: Heavy duty, lubricated, ball bearing unit with cast iron housings.

CAPACITY: Unit load not to exceed 3000 lbs.

MOTOR DRIVE: 1/2 HP, 230/460/3, 60 cycle, ODP right angle gear motor.

ELECTRICAL CONTROLS: Optional.

OPTIONAL EQUIPMENT

STRANDS: 3, 4 or more.

CONSTRUCTION: Durable structural frame.

CHAIN CENTER: 12", 24" or as required by application.

FLOOR SUPPORTS: Supports available. See Conveyor Accessories.

CHAIN SPEED: 35-120 FPM, constant speed (specify). Other constant or variable speed available. **NOTE: CAPACITY CHANGES WITH SPEED.**

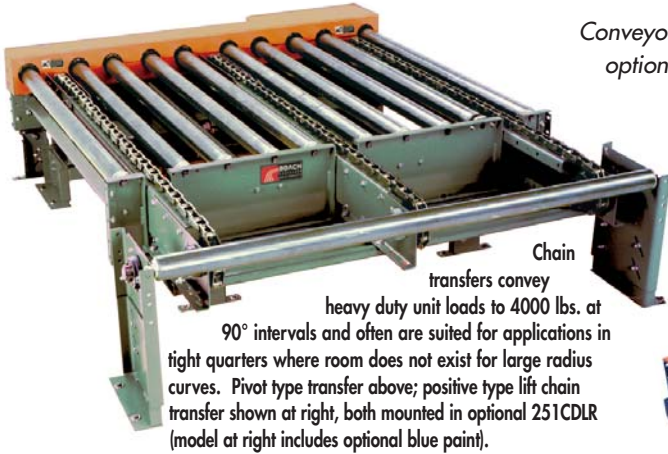
MOTORS: Available through 3 HP in TEFC, explosion proof, dirty duty, 115/230/1, 575/3, etc.

ELECTRICAL CONTROLS: Manual start/stop push button switch; magnetic starter; photo eye; limit switch; photo relay; others available.



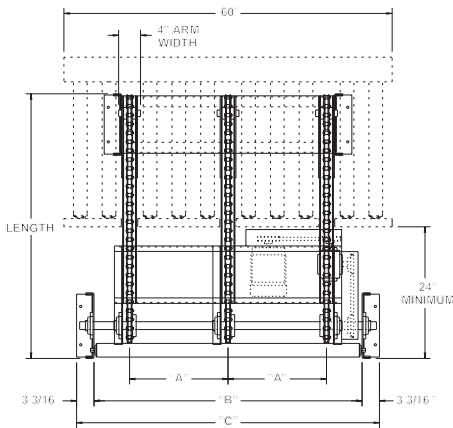
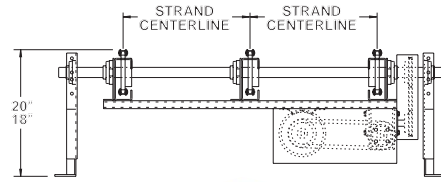
■ 4 week shipment

MODEL CT380/CT360 90° 3-STRAND CHAIN TRANSFER



Conveyors shown with optional supports

■ 4 week shipment



SPECIFICATIONS

TRANSFER ARM: 7 ga. formed channel.

TRANSFER CHAIN: No. 80 (model CT380) or no. 60 (model CT360) riveted roller chain.

STANDARD LENGTHS: 3', 4', 5', 6', 7' and 8' unit lengths.

CHAIN CENTERS: 18"

CHAIN TAKE-UP: Screw Type.

END DRIVE: Allows one-direction (unit) operation; add optional center drive for reversible application.

LIFT: Pivot type.

BEARINGS: Heavy duty, lubricated, ball bearing unit with cast iron housings.

CHAIN SPEED: 35 FPM constant.

MOTOR DRIVE: 1/2 HP, 230/460/3, 60 cycle, ODP right angle gear motor.

CAPACITY: 4000 lbs.

AIR CONTROLS: Air bag(s) with single solenoid valve. (60-80) psi required.

CUTOUTS: Required through conveyor frame transfer mounts in when using end drive; may be required by application for center drive transfers also.

ELECTRICAL CONTROLS: Optional.

OPTIONAL EQUIPMENT

STRANDS: 2, 4 or more.

POSITIVE LIFT: Allows reversible drive and decreased overall length.

FRL: Filter, regulator, lubricator with 3/8" ports.

FLOOR SUPPORTS: See Conveyor Accessories for various elevations and types.

CHAIN CENTER: 12", 24" or as required by application.

CHAIN SPEED: 35-120 FPM, constant speed (specify). Other constant or variable speed available. **NOTE: CAPACITY CHANGES WITH SPEED.**

MOTORS: Available through 2 HP in TEFC, explosion proof, dirty duty, 115/230/1, 575/3, etc.

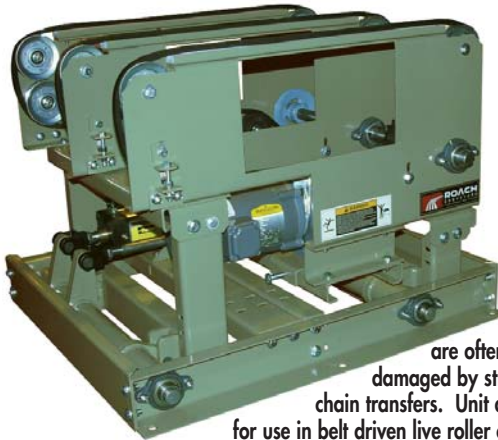
ELECTRICAL CONTROLS: Optional.

LENGTH	MODEL CT360/CT380 WTS. (lbs.)			
	END DRIVE - PIVOT LIFT		CENTER DRIVE - PIVOT LIFT	
	CT360	CT380	CT360	CT380
3'	398	410	433	451
4'	444	460	479	501
5'	490	510	525	551
6'	536	560	571	601
7'	584	612	619	653
8'	631	663	665	704

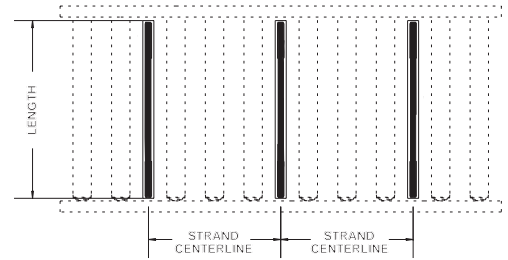
"A"	"B"	"C"
12"	37"	43-3/8"
18"	49"	55-3/8"
24"	61"	67-3/8"



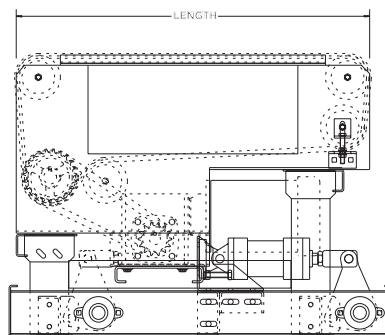
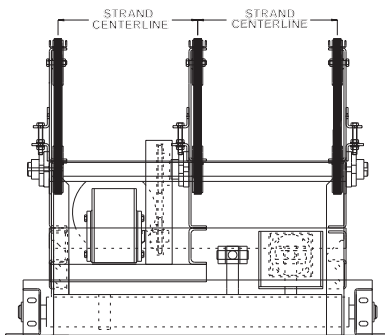
MODEL VBT3 90° 3-STRAND V-BELT TRANSFER



V-belt transfers are ideal for medium duty applications and are often used where product could be damaged by strands of chain on heavier duty chain transfers. Unit at left shown with frame cutout for use in belt driven live roller conveyor with 6" wide belting.



LENGTH	WT. (lbs.)	LENGTH	WT. (lbs.)
3'	395	6'	530
4'	440	7'	575
5'	485	8'	620



SPECIFICATIONS

TRANSFER ARM: 10 ga. formed channel.

TRANSFER BELT: "B" section V-belt.

STANDARD LENGTHS: 3', 4', 5', 6', 7' and 8' unit lengths.

V-BELT CENTERS: 18"

CENTER DRIVE: Allows reversible unit operation.

LIFT: Positive type.

BEARINGS: Heavy duty, lubricated, ball bearing unit with cast iron housings.

BELT SPEED: 35 FPM constant.

MOTOR DRIVE: 1/2 HP, 230/460/3, 60 cycle, ODP right angle gear motor.

FLOOR SUPPORTS: Integral part of unit, with adjustment of 18" to 20" top of V-belt (down position).

CAPACITY: Unit load not to exceed 500 lbs.

ELECTRICAL CONTROLS: Optional.

AIR CONTROL: 60-80 PSI required on air cylinders

OPTIONAL EQUIPMENT

STRANDS: 2, 4 or more.

STRAND CENTER: 12", 24" or as required by application.

BELT SPEED: 35-120 FPM, constant speed (specify). Other constant or variable speed available. **NOTE: CAPACITY CHANGES WITH SPEED.**

MOTORS: Available through 2 HP in TEFC, explosion proof, dirty duty, 115/230/1, 575/3, etc.

ELECTRICAL CONTROLS: Optional.

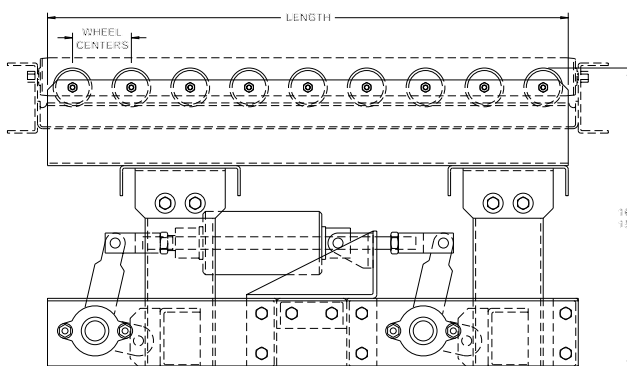
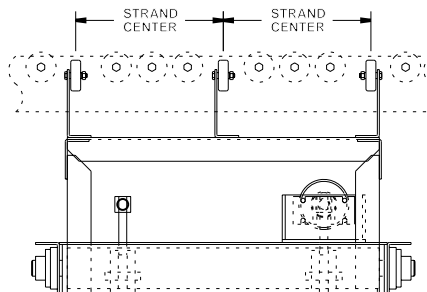


■ 4 week shipment

MODEL WT3 90° 3-STRAND SKATE WHEEL TRANSFER



Shown mounted in optional conveyor



LENGTH	WT. (lbs.)	LENGTH	WT. (lbs.)
2'	375	4'	440
3'	395	5'	485

SPECIFICATIONS

TRANSFER ARM: 7 ga. formed channel.

TRANSFER WHEELS: Frantz model 35Z on 3" wheel centers. Wheels are rated at 50 lbs. capacity each.

STANDARD LENGTHS: 2', 3', 4', and 5'.

STRAND CENTERS: 18"

LIFT: Positive type lift with 1" of net lift.

BEARINGS: Heavy duty, lubricated, ball bearing unit with cast iron housings.

MOUNTING: Integral part of unit, with 15" top of wheel elevation (down position). Unit designed to mount between conveyor frames.

CAPACITY: Unit load not to exceed 500 lbs.

AIR CONTROLS: Air cylinder (double action) with single solenoid valve. (60-80 PSI required)

OPTIONAL EQUIPMENT

STRANDS: 2, 4 or more.

LIFT: Pivot type - allows product to gravity flow from transfer unit.

3" POSITIVE LIFT: Provides greater clearance for transfer.

STRAND CENTER: 12", 24" or as required by application.

SOLENOID: Double solenoid valve.

FLOOR SUPPORTS: Adjustable to provide greater elevation for transferring onto spur lines.

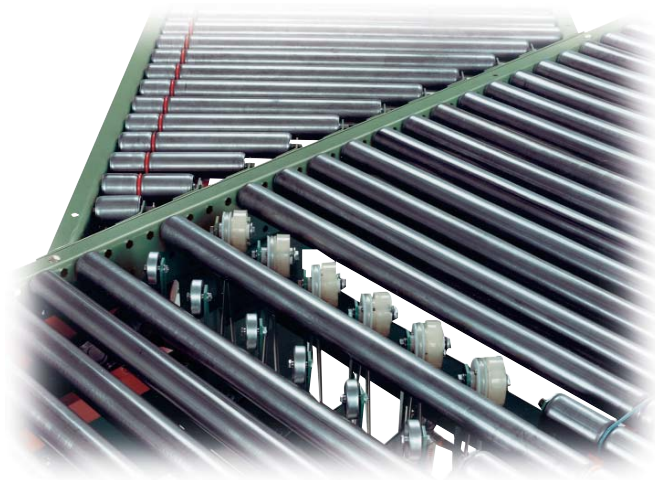
CENTERS: 1-1/2" wheel centers.

ELECTRICAL CONTROLS: Numerous controls available depending on application. Consult factory.

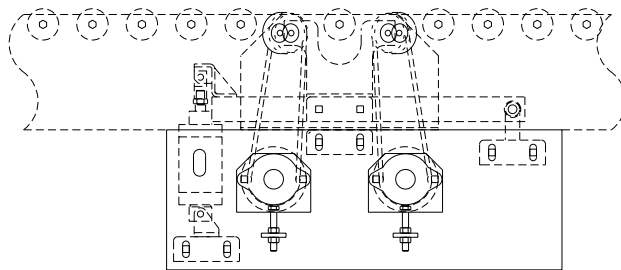
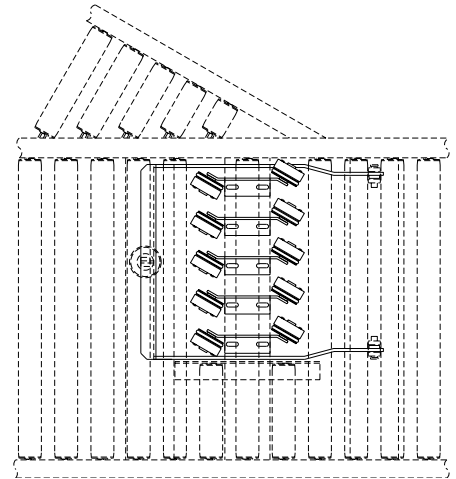
CONVEYOR SECTION: Optional. Transfer mounts into medium and heavy duty gravity conveyors.



MODEL SD60 SKEWED WHEEL DIVERTER



Shown mounted in optional conveyor



SPECIFICATIONS

BELTS: 1/4" dia. round polyurethane.

DRIVE WHEELS: 2-1/2" O.D. x 3/4" face polyurethane, quantity as required, driven by 1/4" dia. polyurethane belts.

DRIVE SHAFT: 1-3/16" dia.

AIR CYLINDER: Double action.

AIR CONTROLS: Single solenoid valve. (60-80) PSI required

FRAME ASSEMBLY: Designed to mount into 196LR, 196CALR and 196LS line shaft driven conveyor.

DIVERSION ANGLE: 30°, 45° and 90°. Guard rails on take-away spur conveyor may be required at various angles.

RATE: Up to 60 sorts per minute.

BEARINGS: Heavy duty, lubricated, ball bearing units with cast iron housings.

SPEED: 60-180 FPM, constant. Other speeds available. Consult factory.

MOTOR DRIVE: 1/2 HP, 230/460/3, 60 cycle, ODP right angle gear motor.

CAPACITY: 50 lbs. per ft.; maximum unit load not to exceed 150 lbs.

OPTIONAL EQUIPMENT

SPEED: Unit speed may be increased from 120 to 250 FPM, constant speed (specify).

MOTORS: Available in TEFC, explosion proof, dirty duty, 115/230/1, 575/3, etc.

SLAVE DRIVEN: Driven by drive shaft on 196LS line shaft conveyor or by return direction of belt on belt driven live roller conveyor. Consult factory.

ELECTRICAL CONTROLS: Designed per application. Consult factory.



■ 4 week shipment

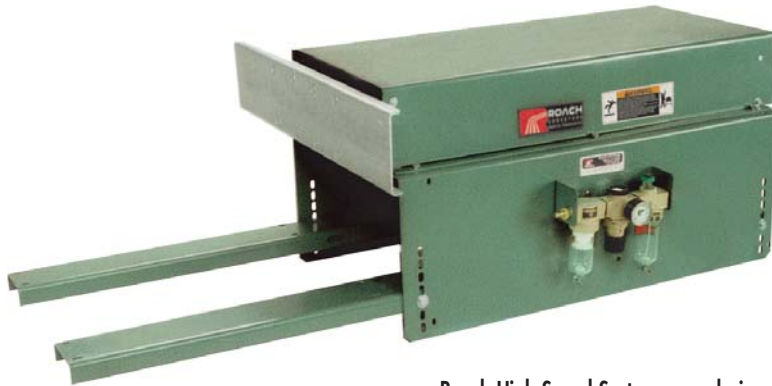
MODEL HSS2 HIGH SPEED SORTER

SPECIFY MODEL NUMBER PER EXAMPLE

HSS218-15

HSS2(stroke)-(between frames)

Stroke available in 18", 24", 30" and 36"



Roach High Speed Sorters were designed in response to an increasing demand for high speed distribution equipment. 35 sorts per minute can be economically and accurately sorted with model HSS2.



SPECIFICATIONS

AIR CYLINDER: 2" dia. bore.

LENGTH OF STROKE: 18", 24", 30" and 36" available.

PUSHER PLATE: 30" wide x 6" high x 1/8" aluminum channel.

MAXIMUM CYCLE RATE: 35 cycles/min.

PUSH-OFF CYCLE TIME: 0.8 second \pm 0.1 second per cycle.

FRL: Included, w/ 3/8" ports.

COMPRESSED AIR: 0.5 cu. ft./min. at 80 to 100 PSI per cycle.

ENCLOSURE: NEMA 1 houses terminal strip for all wiring connections.

WIRING DIAGRAM: Housed inside of terminal box.

ELECTRICAL CONTROLS: 115 volt, single phase, 60 hertz 50 millisecond pulse signal. Unit also includes following controls: 3-position control switch--(1) auto, (2) off, (3) test; sensor to detect complete push-off cycle; stall timer; signal to stop conveyor if cycle time exceeds time set on stall timer.

MISC. TERMINALS: Provided for wiring to back-up sensors which inhibit diverter action until condition is cleared. Terminals also provided for connecting back-up warning light and buzzer and for connecting a push-off cycle counter.



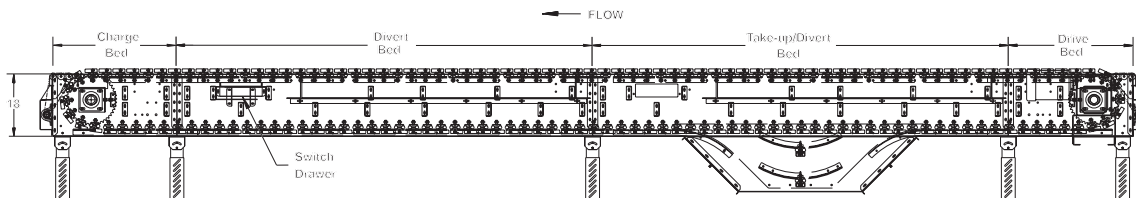
■ 4 week shipment

MODEL FS150 FLITE SORTER



Conveyor shown with optional supports

High rate package sortation up to 150 cartons per minute may be accurately and gently sorted using Roach model FS150, flite sortation conveyor.



SPECIFICATIONS

ROLLERS: Densely located to carry various size unit loads/weights.

FRAME: Heavily constructed 12 ga. for long lasting operation.

DIVERT SHOES: Guided by UHMW wearstrip for smooth, quiet operation.

RATE: 150 cartons/min. maximum.

DRIVE: 1 HP, 230/460/3, 60 cycle, ODP right angle gear motor.

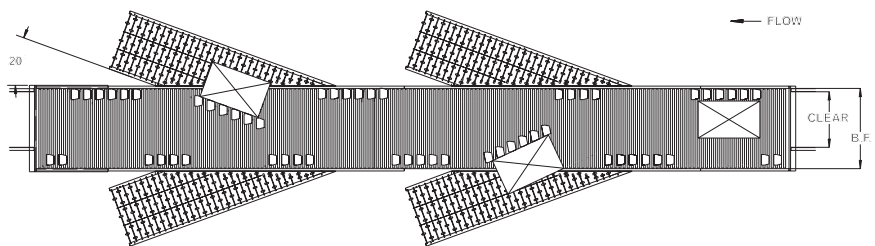
SPEED: Varies with desired rate of flow.

FLOOR SUPPORTS: Supports, knee braces, casters, and polytier supports available. See Conveyor Accessories.

ELECTRICAL CONTROLS: Custom designed for specific application. Consult factory.

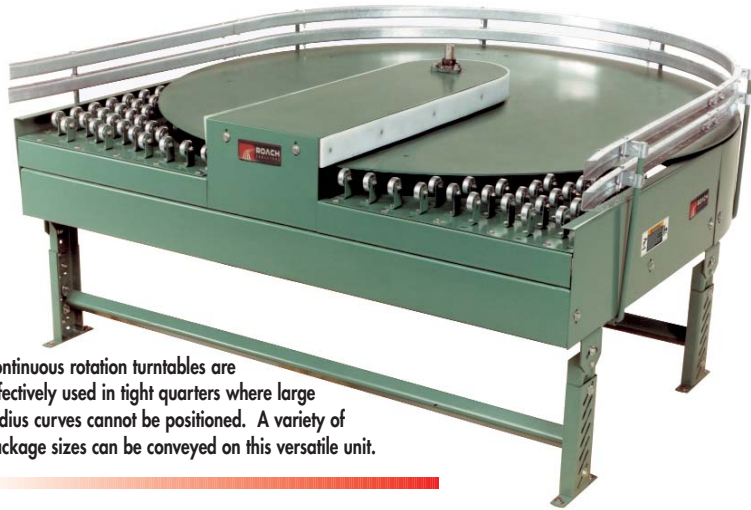
PACKAGE SIZE: Minimum length 9"; maximum length 48". Minimum width 1"; maximum width 36".

PACKAGE WEIGHT: Preferred package weight range is 2 to 100 lbs.



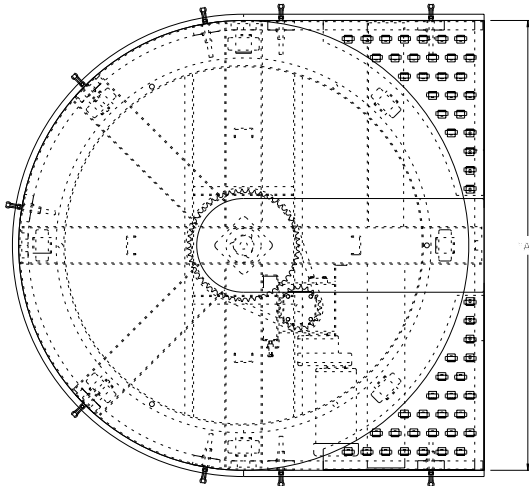
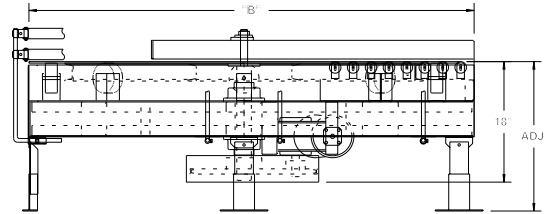
■ 12 week shipment

MODEL CRT MEDIUM DUTY CONTINUOUS ROTATION POWERED TURNTABLE



Conveyor shown with optional supports

Continuous rotation turntables are effectively used in tight quarters where large radius curves cannot be positioned. A variety of package sizes can be conveyed on this versatile unit.



SPECIFICATIONS

ROTATION: 360° continuous.

SPEED: 60 FPM at outside diameter.

CHAIN DRIVE: No. 80 roller chain.

CHAIN GUARD: The chain drive is completely enclosed.

CASTERS: (8) 5" dia. heavy duty rubber-covered casters support rotation of turntable carrier platform.

SKATE WHEELS: 1-15/16" dia. zinc-plated skate wheels located at infeed and discharge ends to provide access onto and off of turntable.

BEARINGS: Removable type, heavy duty ball bearing 4-hole flange.

ELEVATION: Minimum 18" to top of plate.

CARRIER PLATFORM: 1/4" thick steel plate rotates on heavy duty casters to carry unit loads.

MOTOR DRIVE: 3/4 HP, 230/460/3, 60 cycle, ODP right angle gear motor.

CAPACITY: 500 lbs. maximum load; 150 lbs. maximum unit load.

ELECTRICAL CONTROLS: Optional.

"A"	"B"	WEIGHT (lbs.)
3'	38-1/2"	523
4'	50-1/2"	741
6'	74-1/2"	959
8'	98-1/2"	1177

OPTIONAL EQUIPMENT

ELEVATION: Other height elevations to top of plate available; consult factory.

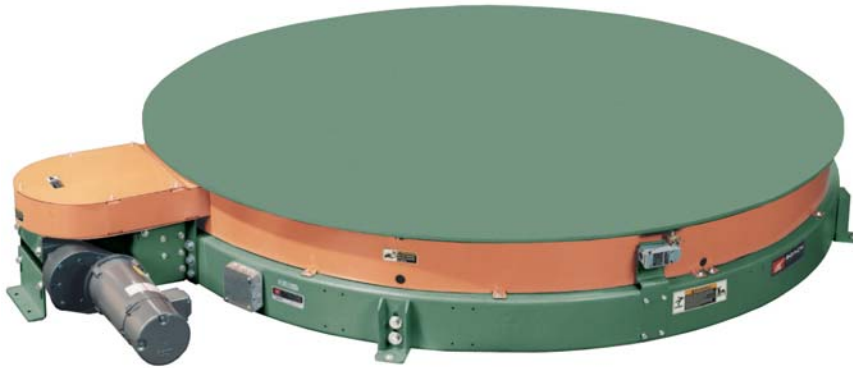
MOTORS: Available through 2 HP in TEFC, explosion proof, dirty duty, 115/230/1, 575/3, etc.

ELECTRICAL CONTROLS: Manual start/stop push button switch; magnetic starter; limit switch; photo relay; others available.

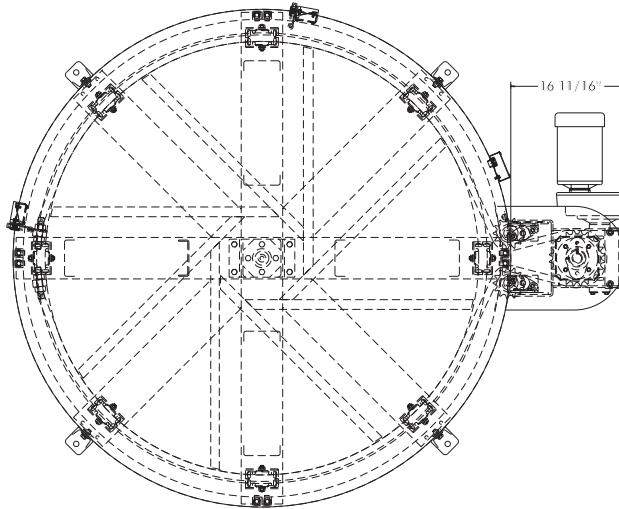
NOTE: Orientation of product may be affected using continuous rotation powered turntable. If orientation of product must be maintained, consult factory for other options.



MODEL IPT HEAVY DUTY INDEXING POWERED TURNTABLE



Indexing powered turntables convey heavy unit loads in numerous applications. A heavy duty chain driven live roller may be mounted on turntable platform and rotated to orient product at specified intervals allowing operator to perform a variety of tasks.



SPECIFICATIONS

ROTATION: 2 position, 3 position or 4 position.

SPEED: 35 FPM at outside diameter.

CHAIN DRIVE: No. 80 roller chain.

CHAIN GUARD: The chain drive is completely enclosed.

CASTERS: (8) 4" dia. heavy duty rubber-covered casters support rotation of turntable carrier platform.

DIAMETER: 3'-0", 3'-6", 4'-0", 4'-6", 5'-0", 5'-6", 6'-0", 6'-6", 7'-0", 7'-6" and 8'-0" dia.

CARRIER PLATFORM: 3" structural platform with 1/2" thick steel plate supported by heavy duty casters.

BEARINGS: Heavy duty ball bearing 4-hole flange.

CAPACITY: 4000 lbs. max. product load.

MOTOR DRIVE: 3/4 HP, 230/460/3, 60 cycle, ODP right angle gear motor with brake.

ELEVATION: Minimum 12-1/2" to top of plate with (4) structural leveling supports.

ELECTRICAL CONTROLS: Limit switches supplied as follows: 2 position = 2 limit switches; 3 position = 3 limit switches; 4 position = 4 limit switches.

SPECIFY MODEL NUMBER PER EXAMPLE

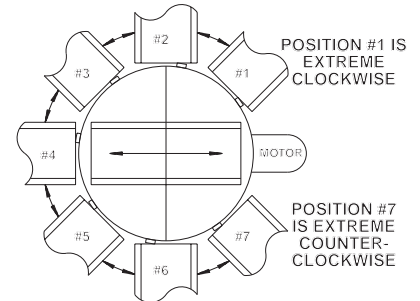
IPT-72-2

IPT-(diameter)-(stop positions)

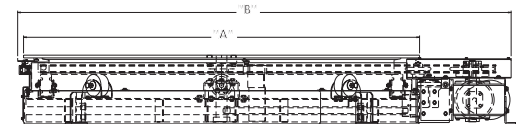
Diameter available in 36", 42", 48", 54", 60", 66", 72", 78", 84", 90" and 96".

Number of stop positions is 2, 3 or 4.

MINIMUM CONVEYOR DISTANCE IS 45 ON EITHER SIDE OF TURNTABLE DRIVE: TURNTABLE IS CAPABLE OF 45 INTERVALS



GENERIC REFERENCE FOR STANDARD LIMIT SWITCH MOUNTED POSITIONS



12-1/2" Minimum Height

"A"	"B"	WEIGHT (lbs.)
3'-0"	53-3/4"	718
3'-6"	59-3/4"	814
4'-0"	65-3/4"	926
4'-6"	71-3/4"	1037
5'-0"	77-3/4"	1158
5'-6"	83-3/4"	1285
6'-0"	89-3/4"	1421
6'-6"	95-3/4"	1564
7'-0"	101-3/4"	1718
7'-6"	107-3/4"	1877
8'-0"	113-3/4"	2045

OPTIONAL EQUIPMENT

ELEVATION: Other height elevations to top of plate available; consult factory.

MOTORS: Available through 2 HP in TEFC, explosion proof, dirty duty, 115/230/1, 575/3, etc.

ELECTRICAL CONTROLS: Manual start/stop push button switch; magnetic starter; photo relay; others available.



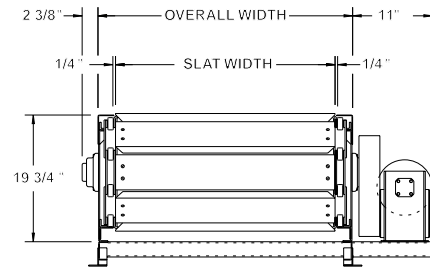
■ 6 week shipment

MODEL 608SL HEAVY DUTY SLAT CONVEYOR

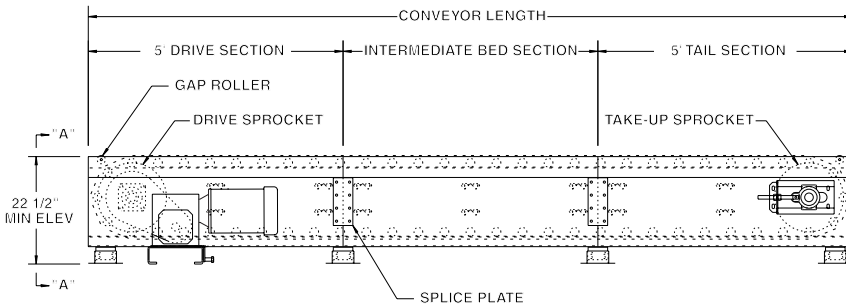
Conveyor shown with optional supports



Model 608SL slat conveyor conveys unstable, irregular shaped objects and those with problem bottom surfaces. It is commonly used in appliance and furniture handling and assembly line operations where product moves at a slow rate of speed through several operator work stations.



SLAT	25"	31"	37"	43"	49"
OAW	31"	37"	43"	49"	55"
OAL	UNIT WEIGHT (lbs.)				
10'	1889	2035	2181	2327	2472
20'	3023	3280	3537	3793	4049
30'	4157	4525	4893	5259	5626
40'	5291	5770	6249	6725	7203
50'	6425	7015	7605	8191	8730
60'	7559	8260	8961	9657	10357
70'	8693	9505	10317	11123	11934
80'	9827	10750	11673	12589	13511
90'	10961	11995	13029	14055	15088
100'	12095	13240	14385	15521	16665
#/FT.	113	124	135	147	157



SPECIFICATIONS

SLAT: 5-3/4" wide formed 7 ga. steel channel. Slat chain, 6" pitch @ 2500 lb. pull each

DRIVE: End side mount drive.

SPEED: 35 FPM, constant (maximum).

TAKE-UP: Screw type.

BED: 19-3/4" deep formed steel channel.

MOTOR DRIVE: 3/4 HP, 230/460/3, 60 cycle, ODP right angle gear motor.

DRIVE CHAIN: Sizes will vary with length of conveyor and chain pull required.

ELECTRICAL CONTROLS: Optional.

OPTIONAL EQUIPMENT

SLAT: Apitong wood.

FLOOR SUPPORTS: See Conveyor Accessories for various elevations and types. Minimum 17" top of slat with floor mounted drive and 6" tooth sprocket.

CONVEYOR SPEED: Other constant or variable speed drives available.

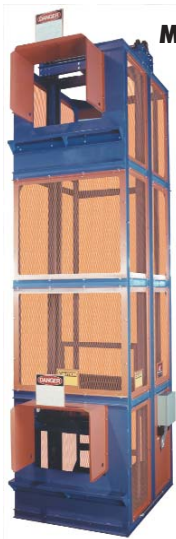
MOTORS: Available through 5 HP in TEFC, explosion proof, dirty duty, 115/230/1, 575/3, etc.

ELECTRICAL CONTROLS: Manual start/stop push button switch; magnetic starter; photo eye; others available.



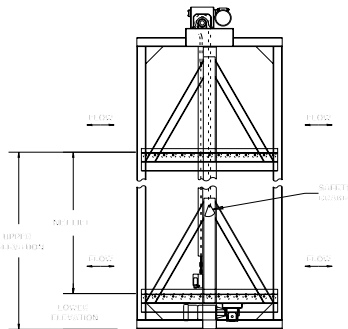
■ 6 week shipment

MODEL RVC / CVC VERTICAL CONVEYORS



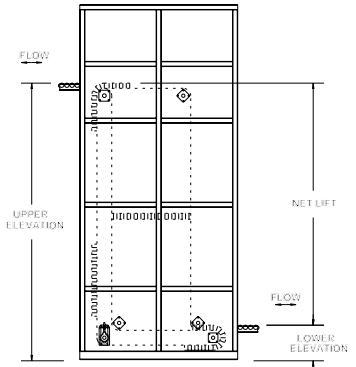
**MODEL RVC
C-FLOW**

RVC SIDE VIEW



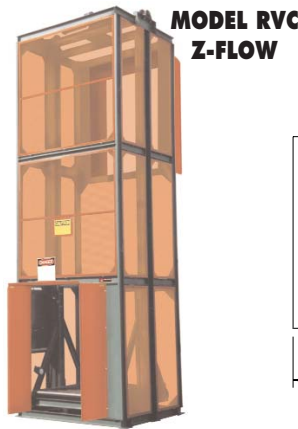
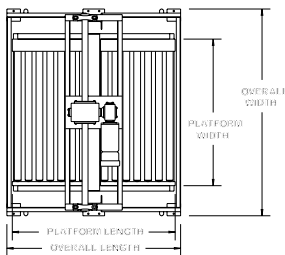
**MODEL CVC
Z-FLOW**

CVC-Z SIDE VIEW



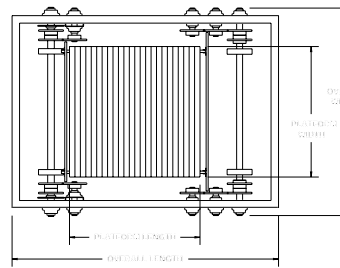
Model RVC above shown with optional blue powder paint.

RVC TOP VIEW



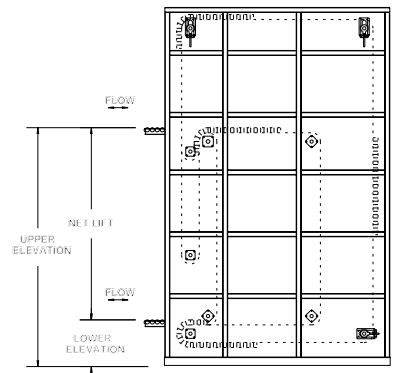
**MODEL RVC
Z-FLOW**

CVC TOP VIEW



**MODEL CVC
C-FLOW**

CVC-C SIDE VIEW



RVC SPECIFICATIONS

- CAPACITY:** Up to 3000 lbs.
- FRAME:** Heavy duty tubular construction.
- DRIVE:** (2) heavy strands of chain to raise and lower carrier platform.
- RATE:** Varies with unit height.
- SPEED:** 60 FPM (120 FPM maximum).
- LOADING:** One or more loading points may be selected at any level.
- PLATFORM:** Specify conveyor type.
- GUARDS:** Expanded metal guarding.
- CONTROLS:** Optional.

CVC SPECIFICATIONS

- CAPACITY:** Up to 3000 lbs.
- FRAME:** Heavy duty tubular construction.
- DRIVE:** (4) continuous roller chains driven by a suitably sized brake motor.
- RATE:** Up to 25 loads per minute.
- SPEED:** 60 FPM (100 FPM maximum).
- LOADING:** Automatic loading is accomplished by metering belt. Operator attention is not required.
- PLATFORM:** Size depends upon product.
- GUARDS:** Expanded metal guarding.
- CONTROLS:** Supplied as required.

CVC NO.	CARRIER PLATFORM DIMENSIONS LENGTH	WIDTH	PLATFORM CAPACITY
60	3" INCR. UP TO 49-1/2"	18" - 60"	200
80	4" INCR. UP TO 78"	24" - 84"	600
100	5" INCR. UP TO 92-1/2"	30" - 96"	1000
122	6" INCR. UP TO 105"	36" - 96"	2000
143	8" INCR. UP TO 108"	36" - 96"	3000



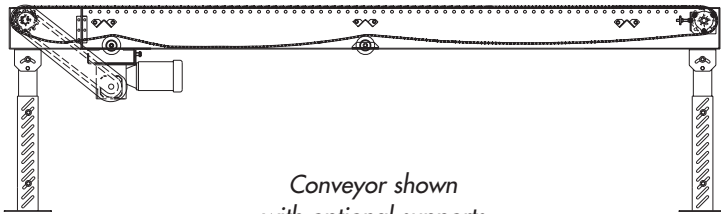
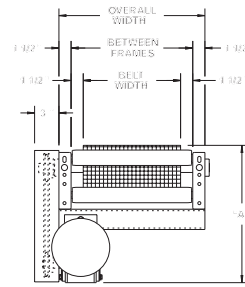
■ 8 week shipment

MODEL 700SBW WIRE MESH BELT CONVEYOR



Conveyor shown with optional supports

Roach wire mesh belt conveyors can be used in a variety of conditions to convey hot, cold or oily products in oven, cooling or other special conditions.



Conveyor shown with optional supports

SPECIFICATIONS

BELTING: 1/2" x 1" x 11 ga. clinched edge, galvanized wire mesh belt.

DRIVE SPROCKETS: 4" dia. sprocket with 1-3/16" dia. shaft or 8" dia. sprocket with 1-7/16" dia. shaft.

TAIL SPROCKETS: 4" dia. sprocket with 1-3/16" dia. shaft.

END DRIVE: One-direction unit operation.

TAKE-UP: Screw type unit at tail end provides 12" belt take-up.

RETURN ROLLERS: 1.9" dia. x 16ga. steel, model 196S, adjustable.

BED: 7" x 1-1/2" x 12 ga. formed channel frame with UHMW wear strips.

BEARINGS: Drive and tail shaft bearings are precision, heavy duty, lubricated, ball bearing units with cast iron housings.

BELT SPEED: 60 FPM, constant.

MOTOR DRIVE: 1/3 HP, 230/460/3, 60 cycle, ODP right angle gear motor.

ROLLER CHAIN: Drive shaft is driven by No. 50 roller chain for 1-1/2 HP or less and No. 60 chain on larger drives. Chain take-up provided on motor base.

HP @ 60 FPM	"A" MAX		"B" MAX	
	4" DRV.	8" DRV.	4" DRV.	8" DRV.
1/3	16-5/8"	16-5/8"	27-3/32"	33-3/32"
1/2	16-5/8"	16-5/8"	27-3/32"	33-3/32"
3/4	17"	17"	27-23/32"	33-23/32"
1	17-1/4"	17-1/4"	28-15/32"	34-15/32"
1-1/2	18-1/8"	18-1/8"	31-3/32"	37-3/32"
2	19"	19"	32-3/32"	38-3/32"

OPTIONAL EQUIPMENT

BELTING: High carbon, stainless steel, others available. Consult factory.

SPEED: Constant speed 1.5-60 FPM; DC variable speed; AC inverter variable speed. Other constant or variable speeds available. **NOTE: CAPACITY CHANGES WITH SPEED.**

MOTORS: Available through 2 HP in TEFC, explosion proof, dirty duty, 115/230/1, 575/3, etc.

FLOOR SUPPORTS: Supports, knee braces, casters, and polytier supports available. See Conveyor Accessories.

ELECTRICAL CONTROLS: Magnetic or manual starter; limit switch; others available.

⚠ WARNING

Prevent pinch points that exist when belt conveyors are permanently attached to other conveyors or equipment!



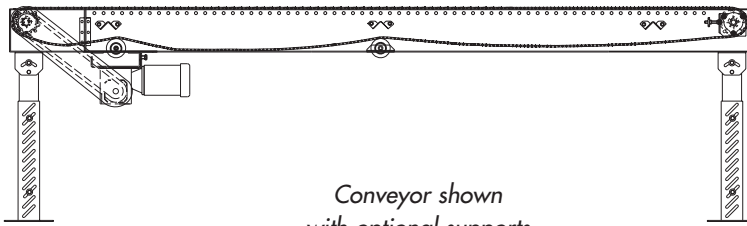
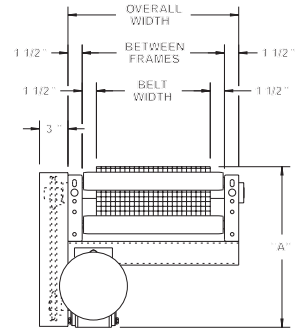
■ 4 week shipment

MODEL 700SBO OPEN BED STYLE WIRE MESH BELT CONVEYOR



Conveyor shown with optional supports

Roach open type wire mesh belt conveyors offer opening in bed to allow air or various sprays to pass through belt and conveyors to accommodate numerous spraying or drying applications.



Conveyor shown with optional supports

SPECIFICATIONS

BELTING: 1/2" x 1" x 11 ga. clinched edge, galvanized wire mesh belt.

DRIVE SPROCKETS: 4" dia. with 1-3/16" dia. shaft; 8" dia. with 1-7/16" dia. shaft.

TAIL SPROCKETS: 4" dia. sprocket with 1-3/16" dia. shaft.

END DRIVE: One-direction unit operation.

TAKE-UP: Screw type unit at tail end provides 12" belt take-up.

BED: 7" x 1-1/2" x 12 ga. open type formed channel frame w/ UHMW wear strips.

RETURN ROLLERS: 1.9" dia. x 16ga. steel, model 196S, adjustable.

BELT SPEED: 60 FPM, constant.

BEARINGS: Drive and tail shaft bearings are precision, heavy duty, lubricated, ball bearing units with cast iron housings.

MOTOR DRIVE: 1/3 HP, 230/460/3, 60 cycle, ODP right angle gear motor.

ROLLER CHAIN: Drive shaft is driven by No. 50 roller chain for 1-1/2 HP or less and No. 60 chain on larger drives. Chain take-up provided on motor base.

HP @ 60 FPM	"A" MAX		"B" MAX	
	4" DRV.	8" DRV.	4" DRV.	8" DRV.
1/3	16-5/8"	16-5/8"	27-3/32"	33-3/32"
1/2	16-5/8"	16-5/8"	27-3/32"	33-3/32"
3/4	17"	17"	27-23/32"	33-23/32"
1	17-1/4"	17-1/4"	28-15/32"	34-15/32"
1-1/2	18-1/8"	18-1/8"	31-3/32"	37-3/32"
2	19"	19"	32-3/32"	38-3/32"

OPTIONAL EQUIPMENT

BELTING: High carbon, stainless steel, others available. Consult factory.

SPEED: Constant speed 1.5-60 FPM; DC variable speed; AC inverter variable speed. Other constant or variable speeds available. **NOTE: CAPACITY CHANGES WITH SPEED.**

MOTORS: Available through 2 HP in TEFC, explosion proof, dirty duty, 115/230/1, 575/3, etc.

FLOOR SUPPORTS: Supports, knee braces, casters, and polytier supports available. See Conveyor Accessories.

ELECTRICAL CONTROLS: Magnetic or manual starter; limit switch; others available.

WARNING

Prevent pinch points that exist when belt conveyors are permanently attached to other conveyors or equipment!

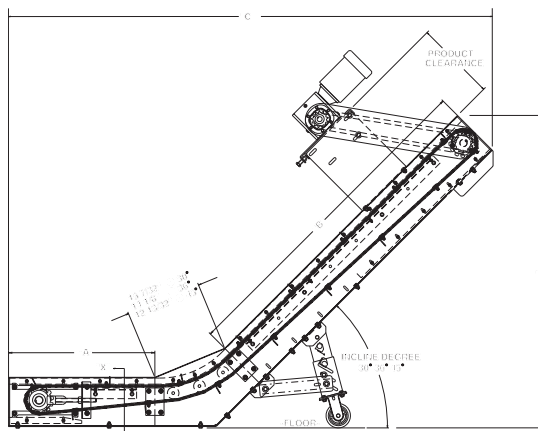
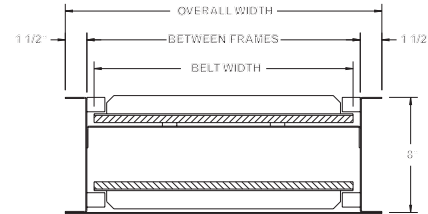
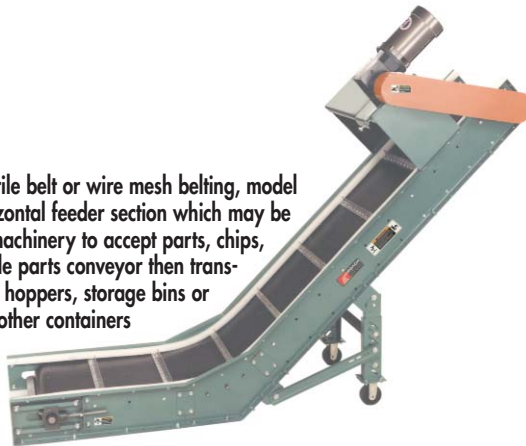


■ 4 week shipment

MODEL PC-F PARTS CONVEYOR WITH FEEDER

Available with nitrile belt or wire mesh belting, model PC-F includes a horizontal feeder section which may be stationed underneath machinery to accept parts, chips, slugs or scrap. This portable parts conveyor then transports such materials into hoppers, storage bins or other containers

for storage, disposal or recycling. Unit shown with standard right hand drive.



		"A"		24" 30" 42"		
BELT	BF	OAW	"B"	UNIT WEIGHTS (lbs.)		
12"	13"	16"	45"	210	218	234
12"	13"	16"	54"	219	228	243
12"	13"	16"	66"	233	250	256
18"	19"	22"	45"	233	243	261
18"	19"	22"	54"	244	254	272
18"	19"	22"	66"	260	270	288
24"	25"	28"	45"	256	268	290
24"	25"	28"	54"	269	281	303
24"	25"	28"	66"	287	299	321

SPECIFICATIONS

BELTING: 3-ply black nitrile belt or 1/2" x 1" flat wire mesh belt with 1-1/2" high galvanized cleats on 12" centers.

DRIVE PULLEY: 4" dia., with 1-3/16" dia. shaft, fully lagged with nitrile belt; 4" dia. sprockets supplied with flat wire mesh belt.

TAIL PULLEY: 4" dia. with 1-3/16" dia. shaft.

TAKE-UP: Screw type unit at tail pulley provides 12" belt take-up.

BED: 8" deep x 12 ga. enclosed box type construction with 14 ga. steel belt return pan.

BEARINGS: All pulley bearings are precision, heavy duty, lubricated, ball bearing units with cast iron housings.

BELT SPEED: 35 FPM, constant.

MINIMUM PARTS SIZE: 1/2" cube for nitrile belt, 1" cube for flat wire mesh belt.

INCLINE: 30, 36 and 45° (specify).

PORTABLE SUPPORT: Adjustable floor support with 4" dia. casters and bracing.

MOTOR DRIVE: 1/3 HP, 230/460/3, 60 cycle, ODP right angle gear motor.

CAPACITY: 350 lbs. total distributed load.

ROLLER CHAIN: No. 50 chain provided at drive pulley. Chain take-up provided on motor base.

ELECTRICAL CONTROLS: Optional.

NOTE: "A" or "B" dimensions not to exceed 10'. Combined lengths of "A" and "B" not to exceed 15'. Cleat centers must not exceed 12". Cleats available in rigid construction ONLY. Consult factory for optional cleats. Minimum parts size of 1/2" cube for neoprene belt, 1" cube for flat wire mesh belt.



■ 3 week shipment

SPECIFICATION TABLE

45°				36°				30°			
"A"	"B"	"C"	"D"	"A"	"B"	"C"	"D"	"A"	"B"	"C"	"D"
24"	45"	72-7/8"	44-1/2"	24"	45"	78-1/2"	39-1/32"	24"	45"	81-3/4"	34-3/8"
24"	54"	79-1/4"	50-7/8"	24"	54"	85-3/4"	44-1/8"	24"	54"	89-1/2"	39"
24"	66"	87-3/4"	59-1/2"	24"	66"	95-1/2"	51-1/8"	24"	66"	99-7/8"	45"
30"	45"	78-7/8"	44-1/2"	30"	45"	84-1/2"	39-1/32"	30"	45"	87-3/4"	34-3/8"
30"	54"	85-1/4"	50-7/8"	30"	54"	91-3/4"	44-1/8"	30"	54"	95-1/2"	39"
30"	66"	93-3/4"	59-1/2"	30"	66"	101-1/2"	51-1/8"	30"	66"	105-7/8"	45"
42"	45"	90-7/8"	44-1/2"	42"	45"	96-1/2"	39-1/32"	42"	45"	99-3/4"	34-3/8"
42"	54"	97-1/4"	50-7/8"	42"	54"	103-3/4"	44-1/8"	42"	54"	107-1/2"	39"
42"	66"	105-3/4"	59-1/2"	42"	66"	113-1/2"	51-1/8"	42"	66"	117-7/8"	45"

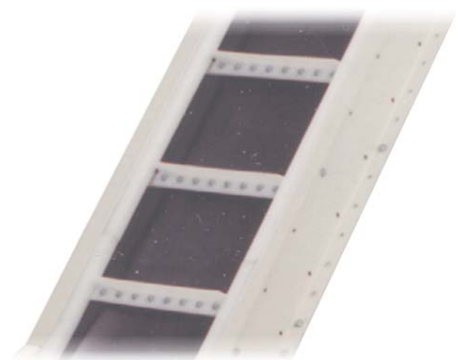
OPTIONAL EQUIPMENT

SPEED: Constant speed 1.5-60 FPM; DC variable speed; AC inverter variable speed. Other constant or variable speeds available. **NOTE: CAPACITY CHANGES WITH SPEED. 100 FPM MAX. WITH ROLL-TO-ROLL CHAIN DRIVE.**

MOTORS: Available through 1 HP in TEFC, explosion proof, dirty duty, brake motor, 115/230/1, 575/3, etc.

FLOOR SUPPORTS: Supports and knee braces available. See Conveyor Accessories.

ELECTRICAL CONTROLS: Magnetic starter (one direction or reversible); one direction manual starter; momentary start/stop push button station; forward/reversing/stop push button station; mounting and pre-wiring for units 12'-0" long and under; limit switch, photo relay; others available.

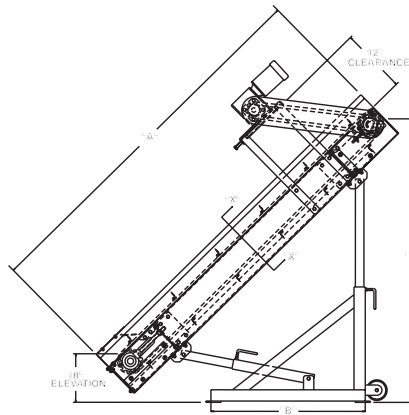
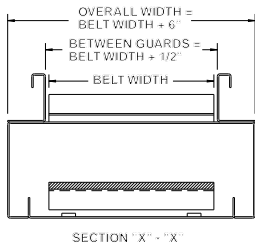


OPTIONAL UHMW CLEATS

MODEL PC PARTS CONVEYOR



Parts conveyors are widely used to convey chips, slugs or scrap materials to hoppers or other containers for disposal or recycling. Model PC, at left is shown with nitrile belt. PC at right includes wire mesh belting. Each PC is supplied with flapper gate at infeed end and right hand drive.



SPECIFICATIONS

BELTING: 3-ply black nitrile belt with 1-1/2" high molded cleats on 12" centers; 1/2" x 1" flat wire mesh belt with 1-1/2" high galv. cleats on 12" centers. **NOTE:** Units with 6" wide belt not available with wire mesh belt.

DRIVE PULLEY: 4" dia. with 1-3/16" dia. shaft, crowned and fully lagged.

TAIL PULLEY: 4" dia., crowned, with 1-3/16" dia. shaft.

BELT RETURN: Formed steel slide retains belt and cleats inside bed.

BEARINGS: All pulley bearings are precision, heavy duty, lubricated, ball bearing units with cast iron housings.

BELT SPEED: 60 FPM, constant.

BED: 7" deep x 12 ga. one piece formed box-type construction.

TAKE-UP: Screw type unit at tail pulley provides 12" belt take-up.

PORTABLE SUPPORT: 4" dia. casters, tubular construction, adjustable both ends.

GUARD RAILS: 3-1/2" high x 12 ga. formed steel with gate at infeed.

MOTOR DRIVE: 1/3 HP, 230/460/3, 60 cycle, ODP right angle gear motor.

CAPACITY: 330 lbs. total distributed live load at 60 FPM.

ELECTRICAL CONTROLS: Optional.

OPTIONAL EQUIPMENT

DRIVE CLEARANCE: Motor drive may be mounted higher above bed or underneath bed for additional clearance.

FLOOR SUPPORTS: Permanent, adjustable supports available. Consult factory.

BELT SPEED: Constant speed 10 to 60 FPM; DC variable speed; AC inverter variable speed. Other constant or variable speeds available. **NOTE: CAPACITY CHANGES WITH SPEED.**

MOTORS: Available through 1 HP in TEFC, explosion proof, dirty duty, 115/230/1, 575/3, etc.

ELECTRICAL CONTROLS: Magnetic starter; manual starter; momentary start/stop push button station; mounting and pre-wiring for units 12'-0" long and under; limit switch; photo relay; others available.

NOTE: Minimum parts size of 1/2" cube for nitrile belt, 1" cube for flat wire mesh belt.

BELT		*6"	8"	12"	18"	24"
BED		12"	12"	18"	24"	30"
"A"	"B"	"C" MAX.		UNIT WEIGHTS (lbs.)		
4'	18"	36"	413	417	480	568 618
6'	30"	56"	447	451	515	605 659
7'	36"	61"	465	469	575	626 688
9'	48"	78"	502	506	595	665 723
11'	60"	95"	539	543	615	704 764

*NOTE: Units with 6" wide belt not available with wire mesh belt.



■ 3 week shipment