

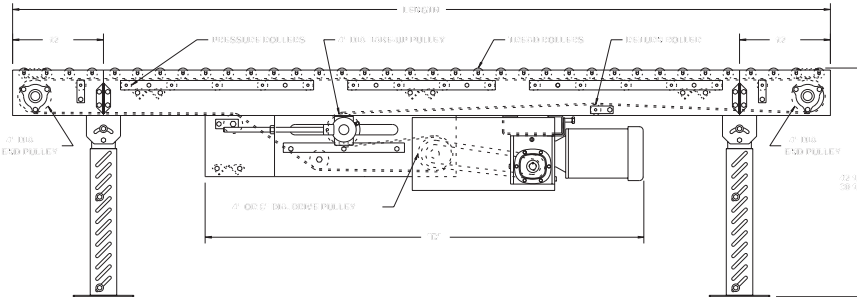
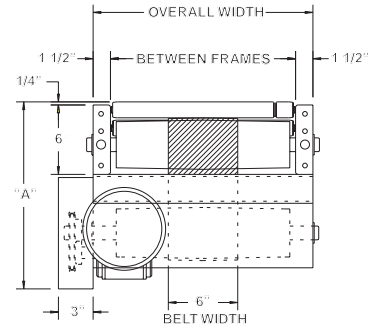
MODEL 138LR

LIGHT DUTY BELT DRIVEN LIVE ROLLER



Conveyor shown with optional supports

138LR is ideally suited for horizontal conveying of items where transfers, side loading or unloading, or temporary accumulation is required in light duty applications or when small items are conveyed requiring close standard roller spacing.



HP @ 60 FPM	"A" MAX		"B" MAX	
	4" DRV.	8" DRV.	4" DRV.	8" DRV.
1/3	15-5/8"	16-5/8"	58-5/32"	58-5/32"
1/2	15-5/8"	16-5/8"	58-5/32"	58-5/32"
3/4	16"	16-5/8"	58-25/32"	58-25/32"
1	16-1/4"	16-5/8"	59-17/32"	59-17/32"
1-1/2	17-1/8"	17-1/8"	61-21/32"	61-21/32"
2	18"	18"	62-21/32"	62-21/32"

SPECIFICATIONS

TREAD ROLLERS: 1-3/8" dia. x 18 ga. galvanized steel, model 138G with 5/16" hex.

PRESSURE ROLLERS: 1-3/8" dia. x 18 ga. galvanized steel, model 138G with 5/16" hex.

RETURN ROLLERS: 1-3/8" dia. x 18 ga. galvanized steel, model 138G with 5/16" hex, adjustable.

BELTING: 6" wide black PVC-120 COS.

CENTER DRIVE: Reversible drive w/ 24" integral belt take-up. Specify location.

DRIVE PULLEY: 4" dia. with 1-3/16" dia. shaft or 8" dia. with 1-7/16" dia. shaft; both crowned and fully lagged.

END PULLEY: 4" dia., crowned, with 1-3/16" dia. shaft.

SPEED: 60 FPM, constant.

BED: 6" x 1-1/2" x 12 ga. channel frame slotted for tread rollers to pop-out. When unit is installed at 7'-0" elevation or higher, rollers must be retained in conveyor frame. Specify desired elevation. Bed sections attached with couplings and floor supports.

SQUARING RODS: Adjustable rods on underside of bed allow frame to be squared for improved belt tracking and are standard on all units over 30'.

MOTOR DRIVE: 1/3 HP, 230/460/3, 60 cycle, ODP right angle gear motor.

BEARINGS: All pulley bearings are precision, heavy duty, lubricated, ball bearing units with cast iron housings.

ROLLER CHAIN: Drive pulley is driven by No. 50 chain for 1-1/2 HP or less and No. 60 chain on larger drives. Chain take-up provided on motor base.

ELECTRICAL CONTROLS: Optional.



WARNING

Pop-out rollers should be retained in frame if unit is elevated to 7'-0" and above.

■ 3 week shipment

SPECIFICATION TABLE

50'-0" lengths and under are equipped with 4" dia. drive pulley; over 50'-0" will have an 8" dia. drive pulley

CONVEYOR LENGTH			6'	10'	15'	20'	25'	30'	40'	50'	60'	70'	80'	90'	100'
BF	OAW	BELT	Unit weights (lbs.) with 1-1/2" roller centers (For other centers, deduct weights below)												
10"	13"	2-1/4"	385	484	609	739	864	990	1250	1504	1752	2022	2281	2541	2794
16"	19"	2-1/4"	447	575	735	886	1046	1202	1517	1832	2150	2463	2778	3093	3409
22"	25"	2-1/4"	504	656	846	1035	1225	1410	1790	2161	2537	2913	3290	3665	4047

Deduct the following weights (lbs.) for other than 1-1/2" centers

BF	ROLLER CENTERS	6'	10'	15'	20'	25'	30'	40'	50'	60'	70'	80'	90'	100'
10"	3"	-36	-60	-90	-120	-150	-180	-240	-300	-360	-420	-480	-540	-600
16"	3"	-54	-90	-135	-180	-225	-270	-360	-450	-540	-630	-720	-810	-900
22"	3"	-72	-120	-180	-240	-300	-360	-480	-600	-720	-840	-960	-1080	-1200
10"	4-1/2"	-48	-80	-120	-160	-200	-240	-320	-400	-480	-560	-640	-720	-800
16"	4-1/2"	-72	-120	-180	-240	-300	-360	-480	-600	-720	-840	-960	-1080	-1200
22"	4-1/2"	-96	-160	-240	-320	-400	-480	-640	-800	-960	-1120	-1280	-1440	-1600

OPTIONAL EQUIPMENT

BELTING: 6" wide black PVC-150; 12" wide PVC-120.

END DRIVE: Mounted underneath conveyor. Minimum possible height is 20" TOR for underneath mounted end drive. Belt take-up required for end drive (if substituting end drive for center drive).

SIDE MOUNTED END DRIVE: Provides overall conveyor height of 9".

AUXILIARY TAKE-UP: Provides 24" of belt take-up. Specify location. See Power Accessories.

FLOOR SUPPORTS: Supports, knee braces, casters and polytier supports available. See Conveyor Accessories.

CEILING HANGERS: 5/8" dia. threaded rod with hardware to attach rods to conveyor. Provides 6' clearance between ceiling and TOR (furnished in place of floor supports). See Conveyor Accessories.

MOTORS: Available through 3 HP in TEFC, explosion proof, dirty duty, brake motor, 115/230/1, 575/3, etc.

SPEED: Constant speed 3-120 FPM; DC variable speed; AC inverter variable speed. Other constant or variable speeds available. **NOTE: CAPACITY CHANGES WITH SPEED.**

GUARD RAILS: 1-3/4" x 1" formed channel (model GC), adjusts horizontally to 8" wider than roller and vertically to 6" above roller; formed steel fixed (model FSG in 2", 4" and 6" heights; fixed channel (model FC); 1-1/2" angle (model GA1-1/2). See Conveyor Accessories.

ELECTRICAL CONTROLS: Magnetic starter (one direction or reversible); One direction manual starter; Momentary start/stop push button station; Forward/reversing /stop push button station. Mounting and pre-wiring for units up to 12' long.



POP-OUT ROLLERS (some rollers raised for clarity)

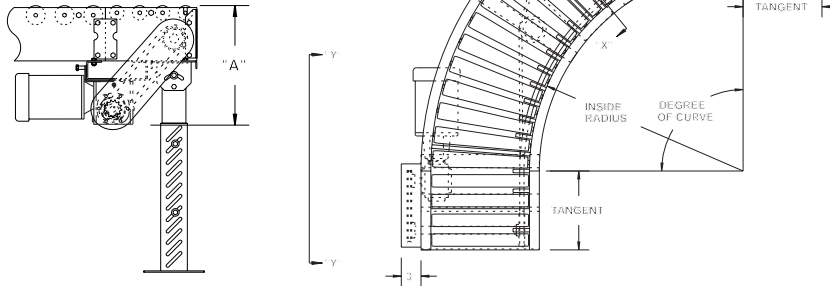
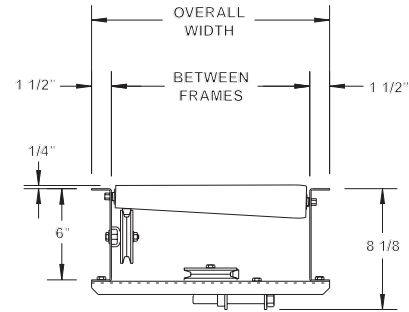


MODEL 138LRC LIGHT DUTY BELT DRIVEN LIVE ROLLER CURVE



Conveyor shown with optional supports

Model 138LRC features tapered rollers to maintain product orientation. Reversible, it is also commonly slave driven from 138LR and 138VP making it the ideal curve in light duty applications.



HP @ 60 FPM	"A" MAX
1/3, 1/2	15-5/8"
3/4	16"
1	16-1/4"
1-1/2	17-1/8"
2	18"

SPECIFICATIONS

TREAD ROLLERS: 1.9" dia. to 1-3/8" dia. x 16 ga. tapered rollers, model 138T; 1-3/8" dia. x 18 ga., model 138G w/ 5/16" hex, galvanized straight tangent rollers.

ROLLER CENTERS: 1-9/16" measured at inside radius of unit.

PRESSURE SHEAVES: Provides drive belt pressure to upper tread rollers.

BELT: "B" section V-belt.

TAKE-UP: Screw type adjustable sheave with flat idler sheaves to maintain belt tension.

TANGENTS: 12" both ends on 90° unit; 18" both ends on 45° unit.

BED: 6" x 1-1/2" x 12 ga. formed steel channel frame.

SPEED: 60 FPM, constant.

BEARINGS: End shafts are supported by precision, heavy duty, lubricated, ball bearing units with cast iron housings.

ROLLER CHAIN: Drive shaft is driven by No. 50 chain.

MOTOR DRIVE: 1/3 HP, 230/460/3, 60 cycle, ODP right angle gear motor, located at infeed end of curve below bed.

DRIVE LOCATION: Drive located on outside of curve. Specify left hand tangent length, right hand tangent length and drive location ("left hand drive" or "right hand drive"). NOTE: Drive hand determined with reference point located at outside of curve. For models slave driven (less drive), specify drive shaft location. See "determining drive location" on page 22.

CAPACITY: 300 lb. total distributed live load.

OPTIONAL EQUIPMENT

SPECIAL WIDTHS: Consult factory for pricing of ALL widths not shown.

GUARD RAILS: See Conveyor Accessories for various type guard rails available.

FLOOR SUPPORTS: See Conveyor Accessories for various elevation and types.

TANGENTS: Lengths other than listed available. Combined total length must not exceed 6'-0".

BELT SPEED: Constant speed 10-120 FPM; AC & DC variable speed. Other constant or variable speeds available. **NOTE: CAPACITY CHANGES WITH SPEED.**

MOTORS: Available through 2 HP in TEFC, ex. proof, dirty duty, brake motor, 115/230/1, 575/3, etc.

ELECTRICAL CONTROLS: Magnetic & manual starters; push buttons, etc.

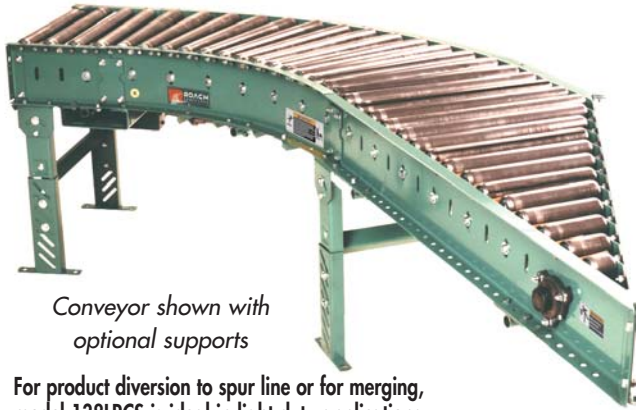
WEIGHTS (LBS.)				
BF	OAW	INSIDE RADIUS	90°	45°
10"	13"	2'-8-1/2"	317	309
16"	19"	2'-8-1/2"	362	350
22"	25"	2'-8-1/2"	407	388

NOTE: This unit is not recommended for accumulating loads.

■ 3 week shipment

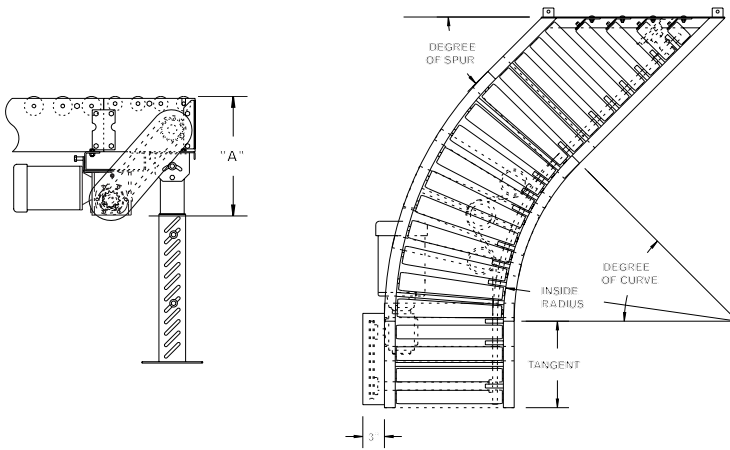
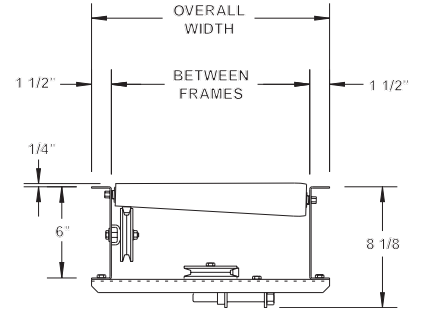


MODEL 138LRCS LIGHT DUTY BELT DRIVEN LIVE ROLLER CURVE SPUR



Conveyor shown with optional supports

For product diversion to spur line or for merging, model 138LRCS is ideal in light duty applications.



SPECIFICATIONS

TREAD ROLLERS: 1.9" dia. to 1-3/8" dia. x 16 ga. tapered rollers, model 138T; 1-3/8" dia. x 18 ga., model 138G w/ 5/16" hex, galvanized straight tangent rollers.

ROLLER CENTERS: 1-9/16" measured at inside radius of unit.

PRESSURE SHEAVES: Provides drive belt pressure to upper tread rollers.

BELT: "B" section V-belt.

TAKE-UP: Screw type adjustable sheave with flat idler sheaves provided to maintain belt tension.

TANGENTS: 12" opposite spur end on 60°/30° unit; 18" opposite spur end on 45°/45° unit.

SPEED: 60 FPM, constant.

BEARINGS: End shafts are supported by precision, heavy duty, lubricated, ball bearing units with cast iron housings.

BED: 6" x 1-1/2" x 12 ga. formed steel channel frame.

ROLLER CHAIN: Drive shaft is driven by No. 50 chain.

MOTOR DRIVE: 1/3 HP, 230/460/3, 60 cycle, ODP right angle gear motor, located under tangent straight section bed.

SPUR HAND/DRIVE LOCATION: Drive located on outside of curve. Specify hand of spur as "left hand" or "right hand" and location of drive specified as "left hand drive" or "right hand drive". Drive location determined with reference point located at outside of curve (see "determining drive location" on pg. 22). For models slave driven (less drive), specify drive shaft location.

CAPACITY: 300 lb. total distributed live load.

HP @ 60 FPM	"A" MAX
1/3, 1/2	15-5/8"
3/4	16"
1	16-1/4"
1-1/2	17-1/8"
2	18"

OPTIONAL EQUIPMENT

SPECIAL WIDTHS: Consult factory for pricing of ALL widths not shown.

GUARD RAILS: See Conveyor Accessories for various type guard rails available.

FLOOR SUPPORTS: See Conveyor Accessories for various elevation and types.

TANGENTS: Lengths other than listed available. Combined total length must not exceed 3'-0".

BELT SPEED: Constant speed 10-120 FPM; AC & DC variable speed. Other constant or variable speeds available. **NOTE: CAPACITY CHANGES WITH SPEED.**

MOTORS: Available through 2 HP in TEFC, ex. proof, dirty duty, brake motor, 115/230/1, 575/3, etc.

ELECTRICAL CONTROLS: Magnetic & manual starters; push buttons, etc.

WEIGHTS (LBS.)				
BF	OAW	INSIDE RADIUS	45°/45°	60°/30°
10"	13"	2'-8-1/2"	384	393
16"	19"	2'-8-1/2"	453	492
22"	25"	2'-8-1/2"	528	588

NOTE: This unit is not recommended for accumulating loads.

■ 3 week shipment



MODEL 196LRC

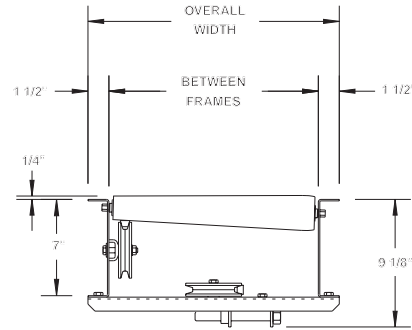
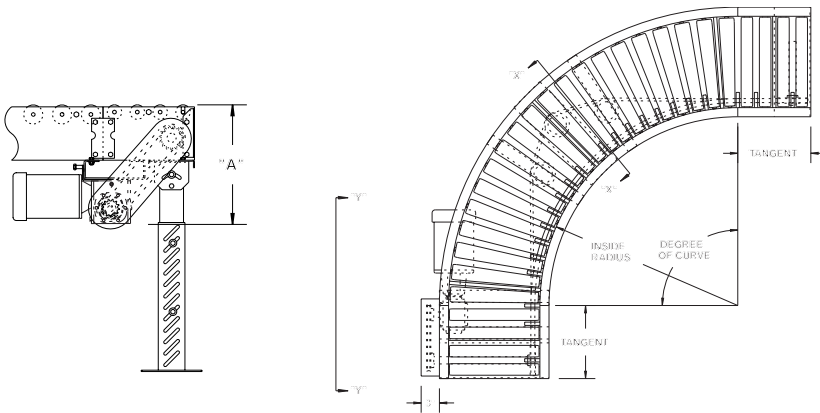
MEDIUM DUTY BELT DRIVEN LIVE ROLLER CURVE

24 HOUR SHIPMENTS INCLUDE 45°, 90° AND 180° CURVES

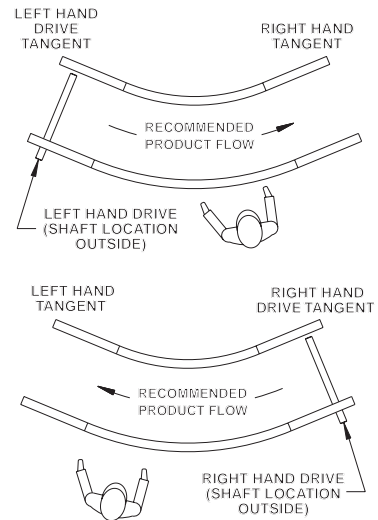


Conveyor shown with optional supports

Roach model 196LRC features tapered rollers to maintain product orientation. Reversible, it is also commonly slave driven from 196VP and 196CALR conveyors.



DETERMINING DRIVE LOCATION



SPECIFICATIONS

TREAD ROLLERS: 2-1/2" dia. to 1-11/16" dia. x 14 ga. steel tapered rollers, model 254T; 1.9" dia. x 16 ga. steel straight tangent rollers, model 196S.

PRESSURE SHEAVES: Provides drive belt pressure to upper tread rollers.

BELT: "B" section V-belt.

TAKE-UP: Screw type adjustable sheaves provided to maintain belt tension.

TANGENTS: 1'-0" both ends on 90°; 1'-6" both ends on 45°; 1'-0" both ends on 180°. Tangent roller centers provided on 3" RC.

SPEED: 60 FPM, constant.

BED: 7" x 1-1/2" x 12 ga. formed steel channel frame.

BEARINGS: End shafts are supported by precision, heavy duty, lubricated, ball bearing units with cast iron housings.

ROLLER CHAIN: Drive shaft is driven by No. 50 chain.

DRIVE LOCATION: Drive located on outside of curve. Specify left hand tangent length, right hand tangent length and drive location ("left hand drive" or "right hand drive"). NOTE: Drive hand determined with reference point located at outside of curve. For models slave driven (less drive), specify drive shaft location.

CAPACITY: 500 lb. total distributed live load.

MOTOR DRIVE: 1/3 HP, 230/460/3, 60 cycle, ODP right angle gear motor, located at infeed end of curve below bed on 45° and 90° curves; 3/4 HP supplied on all 180° curves.

SPECIAL WIDTHS: Consult factory for pricing of ALL widths not shown.

ELECTRICAL CONTROLS: Optional.

HP @ 60 FPM	"A" MAX
1/3, 1/2	16-5/8"
3/4	17"
1	17-1/4"
1-1/2	18-1/8"
2	19"

NOTE: This unit is not recommended for accumulating loads.



■ 24 hour shipment

MODEL			196LRC - 180°			196LRC - 90°			196LRC - 45°		
BF	OAW	INSIDE RADIUS	TAPERED ROLLERS	STRAIGHT ROLLERS	WT. (lbs.)	TAPERED ROLLERS	STRAIGHT ROLLERS	WT. (lbs.)	TAPERED ROLLERS	STRAIGHT ROLLERS	WT. (lbs.)
13"	16"	2'-8-1/2"	40	8	709	20	8	367	10	12	359
15"	18"	2'-8-1/2"	40	8	735	20	8	380	10	12	370
17"	20"	2'-8-1/2"	40	8	769	20	8	397	10	12	385
19"	22"	2'-8-1/2"	40	8	801	20	8	413	10	12	397
21"	24"	2'-8-1/2"	40	8	826	20	8	426	10	12	408
23"	26"	2'-8-1/2"	40	8	855	20	8	440	10	12	421
25"	28"	2'-8-1/2"	40	8	893	20	8	459	10	12	436
27"	30"	2'-8-1/2"	40	8	921	20	8	473	10	12	450
31"	34"	4'-0"	56	8	1255	28	8	640	14	12	547
33"	36"	4'-0"	56	8	1297	28	8	661	14	12	563
37"	40"	4'-0"	56	8	1389	28	8	707	14	12	598
39"	42"	4'-0"	56	8	1435	28	8	730	14	12	616

OPTIONAL EQUIPMENT

SIDE MOUNTED END DRIVE: Provides minimum overall conveyor height of 10".

DRIVE: Located on inside radius of curve.

SPEED: Constant speed 10-120 FPM; DC variable speed; AC inverter variable speed. Other constant or variable speeds available.

FLOOR SUPPORTS: See Conveyor Accessories for various elevation and types.

CEILING HANGERS: 5/8" dia. threaded rod with hardware to attach rods to conveyor. Provides 6' clearance between ceiling and TOR (furnished in place of floor supports). See Conveyor Accessories.

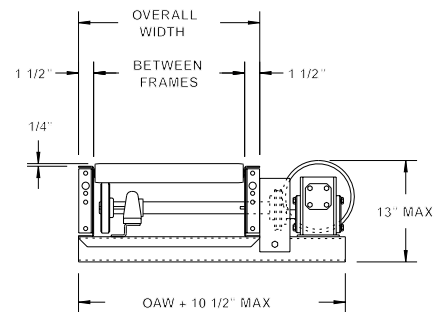
TANGENT LENGTHS: 1'-6", 2'-0", 2'-6", 3'-0", 3'-6", 4'-0", 4'-6" and 5'-0" tangent lengths available on 45° and 90°. Total combined length of tangents not to exceed 6'-0".

GUARD RAILS: 1-3/4" x 1" formed channel (model GC), adjusts horizontally to 8" wider than roller and vertically to 6" above roller; formed steel fixed (model FSG in 2", 4", 6", 8", 12" and 18" heights; 1-1/2" angle (model GA1-1/2). See Conveyor Accessories.

MOTORS: Available through 3 HP in TEFC, explosion proof, dirty duty, brake motor, 115/230/1, 575/3, etc.

ELECTRICAL CONTROLS: Magnetic starter (one direction or reversible); One direction manual starter; Momentary start/stop push button station; Forward/reversing/stop push button station.

OPTIONAL SIDE MOUNTED END DRIVE



UNDERNEATH MOUNTED DRIVE



STRAIGHT TANGENT (located both ends of curve)

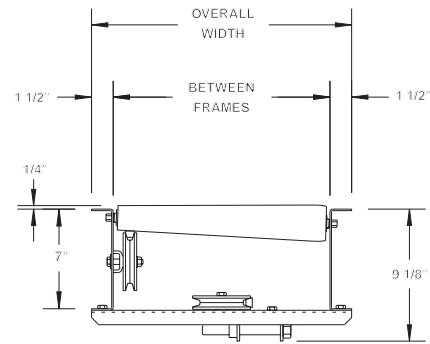
MODEL 196LRCs

MEDIUM DUTY BELT DRIVEN LIVE ROLLER CURVE SPUR

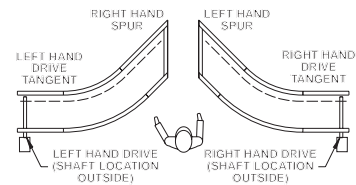
24 HOUR SHIPMENTS INCLUDE 45/45° & 60/30° CURVE SPURS

Conveyor shown with optional supports

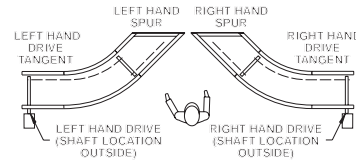
Model 196LRC features tapered rollers to maintain product orientation. Reversible, it is also commonly slave driven from 196VP and 196CALR conveyors.



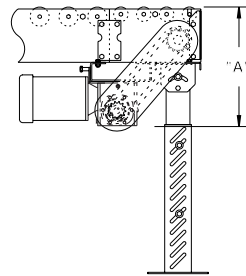
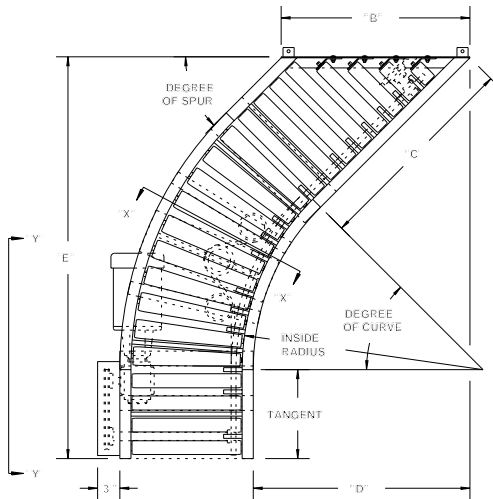
DETERMINING DRIVE LOCATION



PERPENDICULAR LINE APPLICATION



PARALLEL LINE APPLICATION



SPECIFICATIONS

TREAD ROLLERS: 2-1/2" dia. to 1-11/16" dia. x 14 ga. tapered rollers (model 254T); 1.9" dia. x 16 ga. (model 196S) straight tangent rollers.

PRESSURE SHEAVES: Provides drive belt pressure to upper tread rollers.

BELT: "B" section V-belt.

TAKE-UP: Screw type adjustable sheave with flat idler sheaves provided to maintain belt tension.

TANGENTS: 12" opposite spur end on 60/30 unit; 18" opposite spur end on 45/45 unit.

BED: 7" x 1-1/2" x 12 ga. formed steel channel frame.

BEARINGS: End shafts are supported by precision, heavy duty, lubricated, ball bearing units with cast iron housings.

MOTOR DRIVE: 1/3 HP, 230/460/3, 60 cycle, ODP right angle gear motor, located at infeed end of curve below bed.

SPUR HAND/DRIVE LOCATION: Drive located on outside of curve. Specify hand of spur as "left hand" or "right hand" and location of drive specified as "left hand drive" or "right hand drive".

NOTE: Drive location determined with reference point located at outside of curve. For models slave driven (less drive), specify drive shaft location.

BELT SPEED: 60 FPM, constant.

ROLLER CHAIN: Drive shaft is driven by No. 50 chain.

CAPACITY: 500 lb. total distributed live load.

ELECTRICAL CONTROLS: Optional.

HP @ 60 FPM	"A" MAX
1/3, 1/2	16-5/8"
3/4	17"
1	17-1/4"
1-1/2	18-1/8"
2	19"

NOTE: This unit is not recommended for accumulating loads.



■ 24 hour shipment

SPECIFICATION TABLE

UNIT			MODEL 196LRCS - 45°/45°					MODEL 196LRCS - 60°/30°				
BF	OAW	INSIDE RADIUS	"B"	"C"	"D"	"E"	WT. (lbs.)	"B"	"C"	"D"	"E"	WT. (lbs.)
13"	16"	2'-8-1/2"	22-5/8"	26-1/2"	27-13/16"	58-21/32"	422	32"	37-1/8"	47-21/32"	57-13/32"	443
15"	18"	2'-8-1/2"	25-15/32"	28-1/2"	29-1/4"	60-3/32"	441	36"	40-9/16"	50-21/32"	59-1/8"	478
17"	20"	2'-8-1/2"	28-9/32"	30-1/2"	30-21/32"	61-1/2"	465	40"	44-1/32"	53-21/32"	60-7/8"	505
19"	22"	2'-8-1/2"	31-1/8"	32-1/2"	32-1/16"	62-29/32"	486	44"	47-1/2"	56-21/32"	62-19/32"	534
21"	24"	2'-8-1/2"	33-15/16"	34-1/2"	33-15/16"	64-5/16"	514	48"	50-31/32"	59-21/32"	64-11/32"	571
23"	26"	2'-8-1/2"	36-25/32"	36-1/2"	34-29/32"	65-23/32"	541	52"	54-9/16"	62-21/32"	66-1/16"	605
25"	28"	2'-8-1/2"	39-19/32"	38-1/2"	36-5/16"	67-5/32"	571	56"	57-29/32"	65-21/32"	67-13/16"	644
27"	30"	2'-8-1/2"	42-7/16"	40-1/2"	37-23/32"	68-9/16"	599	60"	61-3/8"	68-21/32"	69-17/32"	678
31"	34"	4'-0"	48-3/32"	44-1/2"	45-3/32"	82-11/32"	718	68"	68-9/32"	82-13/32"	86-13/32"	843
33"	36"	4'-0"	50-29/32"	46-1/2"	46-1/2"	83-25/32"	745	72"	71-3/4"	85-13/32"	88-5/32"	878
37"	40"	4'-0"	56-9/16"	50-1/2"	49-11/32"	86-19/32"	823	80"	78-11/16"	91-13/32"	91-5/8"	982
39"	42"	4'-0"	59-13/32"	52-1/2"	50-3/4"	88-1/32"	865	84"	82-5/32"	94-13/32"	93-11/32"	1053

OPTIONAL EQUIPMENT

SIDE MOUNTED END DRIVE: Provides minimum overall conveyor height of 10".

DRIVE: Located on inside radius of curve.

MOTORS: Available through 3 HP in TEFC, explosion proof, dirty duty, brake motor, 115/230/1, 575/3, etc.

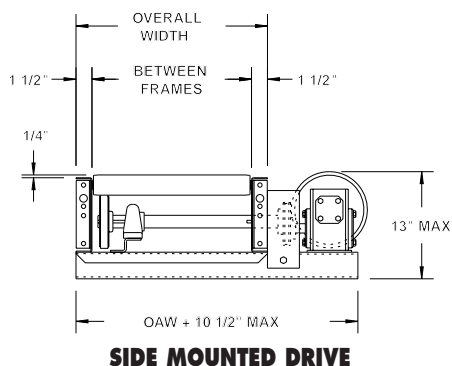
SPEED: Constant speed 10-120 FPM; DC variable speed; AC inverter variable speed. Other constant or variable speeds available.

CEILING HANGERS: 5/8" dia. threaded rod with hardware to attach rods to conveyor. Provides 6' clearance between ceiling and TOR (furnished in place of floor supports). See Conveyor Accessories.

GUARD RAILS: 1-3/4" x 1" formed channel (model GC), adjusts horizontally to 8" wider than roller and vertically to 6" above roller; formed steel fixed (model FSG in 2", 4", 6", 8", 12" and 18" heights; 1-1/2" angle (model GA1-1/2). See Conveyor Accessories.

ELECTRICAL CONTROLS: Magnetic starter (one direction or reversible); One direction manual starter; Momentary start/stop push button station; Forward/reversing /stop push button station.

FLOOR SUPPORTS: See Conveyor Accessories for various elevation and types.



SIDE MOUNTED DRIVE



UNDERNEATH MOUNTED DRIVE



■ 24 hour shipment

SPECIFICATION TABLE

50'-0" lengths and under are equipped with 4" dia. drive pulley; over 50'-0" includes 8" dia. drive pulley

CONVEYOR LENGTH			6'	10'	15'	20'	25'	30'	40'	50'	60'	70'	80'	90'	100'
BF	OAW	BELT	Unit weights (lbs.) with 3" roller centers (For other centers, deduct weights below)												
15"	18"	6"	446	553	722	856	1025	1159	1462	1765	2068	2371	2674	2977	3280
19"	22"	6"	478	600	782	934	1123	1270	1600	1934	2274	2595	2925	3255	3590
21"	24"	6"	511	645	847	1015	1217	1385	1755	2125	2495	2865	3235	3605	3975
25"	28"	6"	557	709	939	1132	1358	1543	1963	2370	2780	3193	3608	4020	4458
27"	30"	6"	579	738	977	1176	1415	1614	2052	2490	2928	3366	3804	4242	4680
33"	36"	6"	650	828	1107	1337	1613	1843	2349	2855	3361	3867	4373	4879	5385
39"	42"	6"	717	928	1237	1501	1810	2074	2647	3220	3793	4366	4939	5512	6085

Deduct the following weights (lbs.) for other than 3" centers

TREAD ROLLER CENTERS	15" BF		19" BF		21" BF		25" BF		27" BF		33" BF		39" BF	
	Per 5'	Per 10'	Per 5'	Per 10'	Per 5'	Per 10'	Per 5'	Per 10'	Per 5'	Per 10'	Per 5'	Per 10'	Per 5'	Per 10'
4-1/2"	-23	-45	-28	-55	-30	-60	-35	-69	-37	-75	-45	-90	-53	-105
6"	-45	-90	-54	-108	-60	-120	-69	-138	-75	-150	-90	-180	-105	-210
9"	-63	-117	-75	-142	-84	-156	-94	-180	-105	-195	-126	-234	-147	-273
12"	-67	-135	-84	-164	-90	-180	-103	-207	-112	-225	-135	-270	-157	-315

OPTIONAL EQUIPMENT

END DRIVE: Mounted underneath conveyor. Minimum possible height is 20" TOR for underneath mounted end drive. Belt take-up required for end drive (if substituting end drive for center drive).

SIDE MOUNTED END DRIVE: Provides overall conveyor height of 10".

192S TREAD ROLLERS: 1.9" dia. x 12 ga. steel tread rollers, model 192S, available in model 192CALR.

GALVANIZED ROLLERS: Both tread and pressure rollers available in galvanized steel, model 196G. Specify tread only or both tread and pressure rollers.

AUXILIARY TAKE-UP: Provides 24" of belt take-up. Specify location. See Power Accessories.

SPEED: Constant speed 3-120 FPM; DC variable speed; AC inverter variable speed. Other constant or variable speeds available. **NOTE: CAPACITY CHANGES WITH SPEED.**

BELTING: 6" wide black PVC-150; 12" wide PVC-120.

GUARD RAILS: 1-3/4" x 1" formed channel (model GC), adjusts horizontally to 8" wider than roller and vertically to 6" above roller; formed steel fixed (model FSG in 2", 4" and 6" heights; fixed channel (model FC); 1-1/2" angle (model GA1-1/2). See Conveyor Accessories.

CEILING HANGERS: 5/8" dia. threaded rod with hardware to attach rods to conveyor. Provides 6' clearance between ceiling and TOR (furnished in place of floor supports). See Conveyor Accessories.

FLOOR SUPPORTS: Supports, knee braces, casters and polytier supports available. See Conveyor Accessories.

MOTORS: Available through 3 HP in TEFC, explosion proof, dirty duty, brake motor, 115/230/1, 575/3, etc.

ELECTRICAL CONTROLS: Magnetic starter (one direction or reversible); One direction manual starter; Momentary start/stop push button station; Forward/reversing /stop push button station. Mounting and pre-wiring for units up to 12' long.



POP-OUT ROLLERS (some rollers raised for clarity)

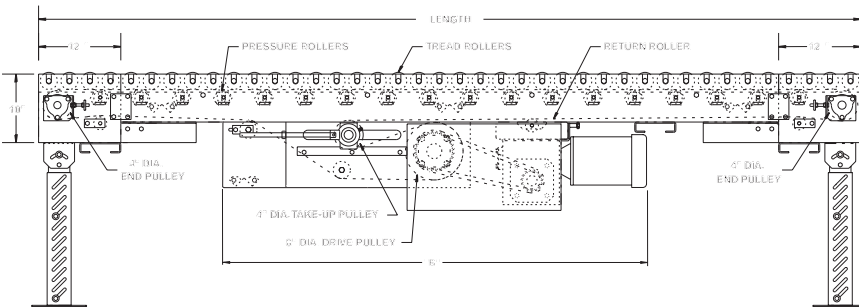
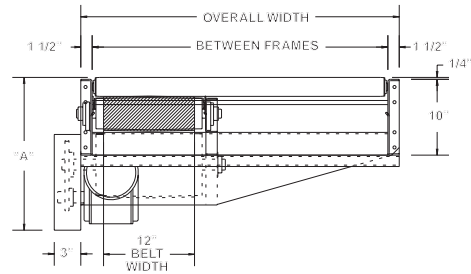
MODEL 251CALR HEAVY DUTY CAM ADJUSTED LIVE ROLLER

24 HOUR SHIPMENTS INCLUDE ALL 1-FOOT INCREMENTS 6'-0" TO 100'-0"



Conveyor shown with optional supports

Roach 251CALR is the choice to horizontally convey heavier unit loads where transfers, side loading or unloading is required. Its standard center drive allows for reversible operation.



HP @ 35 FPM	"A"	"B" MAX.
1	17-5/8"	59-17/32"
1-1/2	18-1/8"	61-21/32"
2	19"	62-21/32"

NOTE: Chart applies for 8" dia. drive pulley only.

SPECIFICATIONS

TREAD ROLLERS: 2-1/2" dia. x 11 ga. steel, model 251S.

PRESSURE ROLLERS: 1.9" dia. x 16 ga. steel, model 196S; same BF as conveyor up to 39" BF; units 43" BF and above, rollers are 21" BF with STANDARD 12" wide belt; 27" BF if OPTIONAL 24" belt is used.

BELTING: 12" wide PVC-120.

RETURN ROLLERS: 1.9" dia. x 16 ga. steel, model 196S, adjustable.

CENTER DRIVE: Reversible drive with 24" integral belt take-up. Specify location. For units under 8'-0" overall length, drive components must be stacked.

END PULLEY: 4" dia. with 1-3/16" dia. shaft on 15"-39" BF; 6" dia. with 1-7/16" dia. shaft above 39" BF; both crowned.

DRIVE PULLEY: 8" dia. with 1-7/16" dia. shaft on 15"-39" BF; 12" dia. with 1-15/16" dia. shaft above 39" BF; both crowned and fully lagged.

BEARINGS: All pulley bearings are precision, heavy duty, lubricated, ball bearing units with cast iron housings.

BED: 7" x 1-1/2" x 10 ga. formed steel channel frame slotted for tread rollers to pop-out. When unit is installed at 7'-0" elevation or higher, rollers must be retained in conveyor frame. Specify desired elevation. Bed sections attached with couplings and floor supports.

MOTOR DRIVE: 1 HP, 230/460/3, 60 cycle, ODP right angle gear motor.

SPEED: 35 FPM, constant.

ROLLER CHAIN: Drive pulley is driven by No. 50 chain for 1-1/2 HP or less and No. 60 chain on larger drives. Chain take-up provided on motor base.

ELECTRICAL CONTROLS: Optional.



WARNING

Pop-out rollers should be retained in frame if unit is elevated to 7'-0" and above.

■ 24 hour shipment ■ 3 week shipment

SPECIFICATION TABLE

CONVEYOR LENGTH			6'	10'	15'	20'	25'	30'	40'	50'	60'	70'	80'	90'	100'
BF	OAW	BELT	Unit weights (lbs.) with 3" roller centers (For other centers, deduct weights below)												
15"	18"	12"	572	762	1036	1274	1548	1786	2298	2810	3322	3834	4346	4858	5370
	21"	12"	661	894	1221	1513	1840	2132	2751	3370	3989	4608	5227	5846	6465
	27"	12"	770	1055	1453	1810	2208	2565	3320	4075	4830	5585	6340	7095	7850
	33"	12"	872	1197	1663	2079	2541	2956	3833	4710	5587	6464	7341	8218	9095
39"	42"	12"	968	1345	1863	2335	2853	3325	4315	5305	6295	7285	8275	9265	10255
	43"	12"	1064	1493	2063	2591	3165	3694	4797	5900	7003	8106	9209	10312	11415
	51"	12"	1160	1641	2263	2847	3477	4063	5279	6495	7711	8927	10143	11359	12575
	57"	12"	1256	1789	2463	3103	3789	4432	5761	7090	8419	9748	11077	12406	13735

Deduct the following weights (lbs.) for other than 3" centers

TREAD ROLLER CENTERS	15" BF	21" BF	27" BF	33" BF	39" BF	45" BF	51" BF	57" BF
	Per 10'	Per 10'	Per 10'	Per 10'	Per 10'	Per 10'	Per 10'	Per 10'
4-1/2"	-108	-136	-174	-208	-240	-272	-304	-336
6"	-178	-228	-292	-348	-402	-456	-510	-564
9"	-240	-308	-394	-470	-544	-618	-692	-766
12"	-266	-342	-438	-522	-602	-682	-762	-842

OPTIONAL EQUIPMENT

END DRIVE: Mounted underneath conveyor. Minimum possible height is 20" TOR for underneath mounted end drive. Belt take-up required for end drive (if substituting end drive for center drive).

SIDE MOUNTED END DRIVE: Provides overall conveyor height of 14-1/4". Specify elevation required on order.

AUXILIARY TAKE-UP: Provides 24" of belt take-up. Specify location. See Power Accessories.

GUARD RAILS: Formed steel fixed model HFSG in 2", 4" and 6" heights; 1-1/2" angle model HGA1-1/2). See Conveyor Accessories.

CEILING HANGERS: 5/8" dia. threaded rod with hardware to attach rods to conveyor. Provides 6' clearance between ceiling and TOR (furnished in place of floor supports). Consult factory.

BELTING: 12" wide black PVC-150; 24" wide PVC-120.

FLOOR SUPPORTS: Supports, knee braces, casters and polytier supports available. See Conveyor Accessories.

SPEED: Constant speed 8-120 FPM (12" dia. drive pulley); DC variable speed; AC inverter variable speed. Other constant or variable speeds available. **NOTE: CAPACITY CHANGES WITH SPEED.**

MOTORS: Available through 3 HP in TEFC, explosion proof, dirty duty, brake motor, 115/230/1, 575/3, etc.

ELECTRICAL CONTROLS: Magnetic starter (one direction or reversible); One direction manual starter; Momentary start/stop push button station; Forward/reversing /stop push button station. Mounting and pre-wiring for units up to 12' long.



CALR CAM AND SERIAL PLATE