

■ 3 week shipment

*When using 2-1/4" wide drive belt, 4" dia. drive pulley supplied up to 20'-0" long; 8" dia. pulley supplied over 20'-0" unit lengths.
 *When using OPTIONAL 6" wide drive belt, 4" dia. drive pulley supplied up to 50'-0" long; 8" dia. pulley supplied over 50'-0" unit lengths.
 *When slave driving other units, OPTIONAL 6" wide drive belt must be used on units 20'-0" and above.

SPECIFICATION TABLE

20'-0" lengths and under are equipped with 4" dia. drive pulley; over 20'-0" includes 8" dia. drive pulley

CONVEYOR LENGTH			6'	10'	15'	20'	25'	30'	40'	50'	60'	70'	80'	90'	100'
BF	OAW	BELT	Unit weights (lbs.) with 1-1/2" roller centers (For other centers, deduct weights below)												
10"	13"	2-1/4"	385	484	609	739	864	990	1250	1504	1752	2022	2281	2541	2794
16"	19"	2-1/4"	447	575	735	886	1046	1202	1517	1832	2150	2463	2778	3093	3409
22"	25"	2-1/4"	504	656	846	1035	1225	1410	1790	2161	2537	2913	3290	3665	4047

Deduct the following weights (lbs.) for other than 1-1/2" centers

BF	ROLLER CENTERS	6'	10'	15'	20'	25'	30'	40'	50'	60'	70'	80'	90'	100'
10"	3"	-36	-60	-90	-120	-150	-180	-240	-300	-360	-420	-480	-540	-600
16"	3"	-54	-90	-135	-180	-225	-270	-360	-450	-540	-630	-720	-810	-900
22"	3"	-72	-120	-180	-240	-300	-360	-480	-600	-720	-840	-960	-1080	-1200
10"	4-1/2"	-48	-80	-120	-160	-200	-240	-320	-400	-480	-560	-640	-720	-800
16"	4-1/2"	-72	-120	-180	-240	-300	-360	-480	-600	-720	-840	-960	-1080	-1200
22"	4-1/2"	-96	-160	-240	-320	-400	-480	-640	-800	-960	-1120	-1280	-1440	-1600

OPTIONAL EQUIPMENT

BELTING: 6" wide PVC-120; 6" wide PVC-150.

END DRIVE: Mounted underneath conveyor. Minimum possible height is 20" TOR for underneath mounted end drive. Belt take-up required for end drive (if substituting end drive for center drive).

SIDE MOUNTED END DRIVE: Provides overall conveyor height of 9".

AUXILIARY TAKE-UP: Provides 24" of belt take-up. Specify location. See Power Accessories.

FLOOR SUPPORTS: Supports, knee braces, casters and polytier supports available. See Conveyor Accessories.

CEILING HANGERS: 5/8" dia. threaded rod with hardware to attach rods to conveyor. Provides 6' clearance between ceiling and TOR (furnished in place of floor supports). See Conveyor Accessories.

SPEED: Constant speed 3-120 FPM; DC variable speed; AC inverter variable speed. Other constant or variable speeds available. **NOTE: CAPACITY CHANGES WITH SPEED.**

GUARD RAILS: 1-3/4" x 1" formed channel (model GC), adjusts horizontally to 8" wider than roller and vertically to 6" above roller; formed steel fixed (model FSG in 2", 4" and 6" heights; fixed channel (model FC); 1-1/2" angle (model GA1-1/2). See Conveyor Accessories.

MOTORS: Available through 3 HP in TEFC, explosion proof, dirty duty, brake motor, 115/230/1, 575/3, etc.

ELECTRICAL CONTROLS: Magnetic starter (one direction or reversible); One direction manual starter; Momentary start/stop push button station; Forward/reversing /stop push button station. Mounting and pre-wiring for units up to 12' long.



VARIABLE PRESSURE ADJUSTMENT



MODEL 196VP

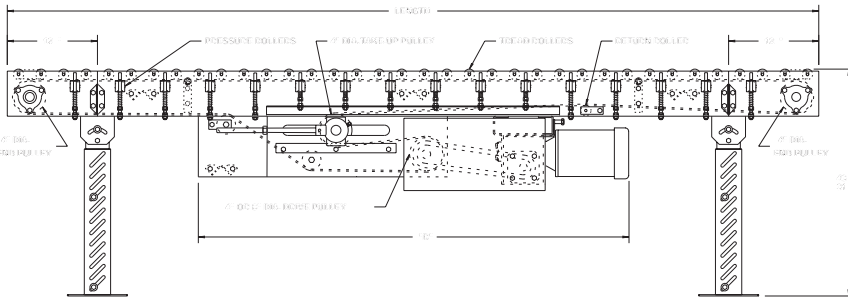
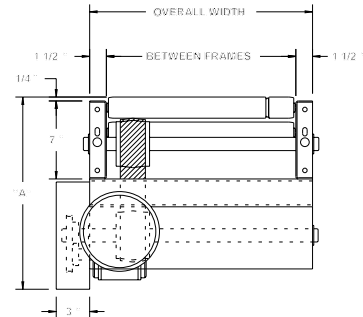
MEDIUM DUTY VARIABLE PRESSURE LIVE ROLLER ACCUMULATOR

24 HOUR SHIPMENTS INCLUDE ALL 1-FOOT INCREMENTS 6'-0" TO 100'-0"



Conveyor shown with optional supports

Model 196VP, variable pressure accumulator, conveys loads up to 125 lbs./ft. with as little as 2-1/2% back pressure. With reversible center drive, this unit accumulates goods safely with minimum back pressure. Ideally, packages of uniform weight can be temporarily accumulated by combining Roach pneumatic package stops.



HP @ 60 FPM	"A" MAX		"B" MAX	
	4" DRV.	8" DRV.	4" DRV.	8" DRV.
1/3	16-5/8"	17-5/8"	58-5/32"	58-5/32"
1/2	16-5/8"	17-5/8"	58-5/32"	58-5/32"
3/4	17"	17-5/8"	58-25/32"	58-25/32"
1	17-1/4"	17-5/8"	59-17/32"	59-17/32"
1-1/2	18-1/8"	18-1/8"	61-21/32"	61-21/32"
2	19"	19"	62-21/32"	62-21/32"

SPECIFICATIONS

TREAD ROLLERS: 1.9" dia. x 16 ga. steel, model 196S.

PRESSURE ROLLERS: 1.9" dia. x 16 ga. steel, model 196S.

RETURN ROLLERS: 1.9" dia. x 16 ga. steel, model 196S, adjustable.

BELTING: 2-1/4" wide "high strength" PVC-150 belt. ***NOTE: WHEN SLAVE DRIVING OTHER UNITS, OPTIONAL 6" WIDE PVC-120 DRIVE BELT MUST BE USED ON UNITS 20' LONG AND ABOVE.**

CENTER DRIVE: Reversible drive with 24" integral belt take-up. For units under 8'-0" overall length, drive components must be stacked. Consult factory for minimum unit elevation.

END PULLEY: 4" dia., crowned, with 1-3/16" dia. shaft.

DRIVE PULLEY: *4" dia. with 1-3/16" dia. shaft or 8" dia. with 1-7/16" dia. shaft, both crowned and fully lagged.

SPEED: 60 FPM, constant.

BED: 7" x 1-1/2" x 12 ga. channel frame slotted for tread rollers to pop-out. When unit is installed at 7'-0" elevation or higher, rollers must be retained in conveyor frame. Specify desired elevation. Bed sections attached with couplings and floor supports.

SQUARING RODS: Adjustable rods on underside of bed allow frame to be squared for improved belt tracking and are standard on all units over 30'.

BEARINGS: All pulley bearings are precision, heavy duty, lubricated, ball bearing units with cast iron housings.

MOTOR DRIVE: 1/3 HP, 230/460/3, 60 cycle, ODP right angle gear motor.

ROLLER CHAIN: Drive pulley is driven by No. 50 roller chain for 1-1/2 HP or less and No. 60 chain on larger drives. Chain take-up provided on motor base.

ELECTRICAL CONTROLS: Optional.

⚠ WARNING

Pop-out rollers should be retained in frame if unit is elevated to 7'-0" and above.



■ 24 hour shipment

*When using 2-1/4" wide drive belt, 4" dia. drive pulley supplied up to 20'-0" long; 8" dia. pulley supplied over 20'-0" unit lengths.
 *When using OPTIONAL 6" wide drive belt, 4" dia. drive pulley supplied up to 50'-0" long; 8" dia. pulley supplied over 50'-0" unit lengths.
 *When slave driving other units, OPTIONAL 6" wide drive belt must be used on units 20'-0" and above.

SPECIFICATION TABLE

CONVEYOR LENGTH			6'	10'	15'	20'	25'	30'	40'	50'	60'	70'	80'	90'	100'
BF	OAW	BELT	Unit weights (lbs.) with 3" roller centers (For other centers, deduct weights below)												
15"	18"	2-1/4"	446	553	722	856	1025	1159	1462	1765	2068	2371	2674	2977	3280
19"	22"	2-1/4"	478	600	782	934	1123	1270	1600	1934	2274	2595	2925	3255	3590
21"	24"	2-1/4"	511	645	847	1015	1217	1385	1755	2125	2495	2865	3235	3605	3975
25"	28"	2-1/4"	557	709	939	1132	1358	1543	1963	2370	2780	3193	3608	4020	4458
27"	30"	2-1/4"	579	738	977	1176	1415	1614	2052	2490	2928	3366	3804	4242	4680
33"	36"	2-1/4"	650	828	1107	1337	1613	1843	2349	2855	3361	3867	4373	4879	5385
39"	42"	2-1/4"	717	928	1237	1501	1810	2074	2647	3220	3793	4366	4939	5512	6085

Deduct the following weights (lbs.) for other than 3" centers

TREAD ROLLER CENTERS	15" BF		19" BF		21" BF		25" BF		27" BF		33" BF		39" BF	
	Per 5'	Per 10'	Per 5'	Per 10'	Per 5'	Per 10'	Per 5'	Per 10'	Per 5'	Per 10'	Per 5'	Per 10'	Per 5'	Per 10'
4-1/2"	-23	-45	-28	-55	-30	-60	-35	-69	-37	-75	-45	-90	-53	-105
6"	-45	-90	-54	-108	-60	-120	-69	-138	-75	-150	-90	-180	-105	-210

OPTIONAL EQUIPMENT

END DRIVE: Mounted underneath conveyor. Minimum possible height is 20" TOR for underneath mounted end drive. Belt take-up required for end drive (if substituting end drive for center drive).

SIDE MOUNTED END DRIVE: Provides overall conveyor height of 10".

BELTING: 6" wide black PVC-120; 6" wide black PVC-150; 12" wide PVC-120.

GUARD RAILS: 1-3/4" x 1" formed channel (model GC), adjusts horizontally to 8" wider than roller and vertically to 6" above roller; formed steel fixed (model FSG in 2", 4" and 6" heights; fixed channel (model FC); 1-1/2" angle (model GA1-1/2). See Conveyor Accessories.

CEILING HANGERS: 5/8" dia. threaded rod with hardware to attach rods to conveyor. Provides 6' clearance between ceiling and TOR (furnished in place of floor supports). See Conveyors Accessories.

FLOOR SUPPORTS: Supports, knee braces, casters and polytier supports available. See Conveyor Accessories.

SPEED: Constant speed 3-120 FPM; DC variable speed; AC inverter variable speed. Other constant or variable speeds available. **NOTE: CAPACITY CHANGES WITH SPEED.**

GALVANIZED ROLLERS: Both tread and pressure rollers available in galvanized steel, model 196G. Specify tread only or both tread and pressure rollers.

192S TREAD ROLLERS: 1.9" dia. x 12 ga. steel tread rollers, model 192S, available in model 192VP.

AUXILIARY TAKE-UP: Provides 24" of belt take-up. Specify location. See Power Accessories.

MOTORS: Available through 3 HP in TEFC, explosion proof, dirty duty, brake motor, 115/230/1, 575/3, etc.

ELECTRICAL CONTROLS: Magnetic starter (one direction or reversible); One direction manual starter; Momentary start/stop push button station; Forward/reversing /stop push button station. Mounting and pre-wiring for units up to 12' long.



VARIABLE PRESSURE ADJUSTMENT

■ 3 week shipment

SPECIFICATION TABLE

50'-0" lengths and under are equipped with 4" dia. drive pulley; over 50'-0" includes 8" dia. drive pulley

CONVEYOR LENGTH			6'	10'	15'	20'	25'	30'	40'	50'	60'	70'	80'	90'	100'
BF	OAW	BELT	Unit weights (lbs.) with 3" roller centers (For other centers, deduct weights below)												
15"	18"	6"	446	553	722	856	1025	1159	1462	1765	2068	2371	2674	2977	3280
19"	22"	6"	478	600	782	934	1123	1270	1600	1934	2274	2595	2925	3255	3590
21"	24"	6"	511	645	847	1015	1217	1385	1755	2125	2495	2865	3235	3605	3975
25"	28"	6"	557	709	939	1132	1358	1543	1963	2370	2780	3193	3608	4020	4458
27"	30"	6"	579	738	977	1176	1415	1614	2052	2490	2928	3366	3804	4242	4680
33"	36"	6"	650	828	1107	1296	1613	2232	2700	3168	3638	4104	4572	5040	5508
39"	42"	6"	717	928	1237	1501	1810	2692	2971	3538	4111	4684	5257	5830	6403

Deduct the following weights (lbs.) for other than 3" centers

TREAD ROLLER CENTERS	15" BF		19" BF		21" BF		25" BF		27" BF		33" BF		39" BF	
	Per 5'	Per 10'	Per 5'	Per 10'	Per 5'	Per 10'	Per 5'	Per 10'	Per 5'	Per 10'	Per 5'	Per 10'	Per 5'	Per 10'
4"	-23	-45	-28	-55	-30	-60	-35	-69	-37	-75	-45	-90	-53	-105
6"	-45	-90	-54	-108	-60	-120	-69	-138	-75	-150	-90	-180	-105	-210

OPTIONAL EQUIPMENT

ZONE SINGULATION: Available as option to singulate loads for accumulation or for off-loading purposes. Specify how unit will be off-loaded. Additional controls will be required to unload unit.

ACCUMULATION: 30" and 60" zones available in 3" and 6" roller centers; 40" and 60" zones available in 4" roller centers.

ACCUMULATION CONTROLS: For actuation of zones using photo electric sensors, see pages 50-51 for model SZ196ZPA SMART ZONE®.

BELTING: 6" wide black PVC-150; 12" wide PVC-120.

END DRIVE: Mounted underneath conveyor. Minimum possible height is 20" TOR for underneath mounted end drive. Belt take-up required for end drive (if substituting end drive for center drive).

SIDE MOUNTED END DRIVE: Provides overall conveyor height of 10".

AUXILIARY TAKE-UP: Provides 24" of belt take-up. Specify location. See Power Accessories.

FLOOR SUPPORTS: Supports, knee braces, casters and polytier supports available. See Conveyor Accessories.

CEILING HANGERS: 5/8" dia. threaded rod with hardware to attach rods to conveyor. Provides 6' clearance between ceiling and TOR (furnished in place of floor supports). See Conveyor Accessories.

GUARD RAILS: 1-3/4" x 1" formed channel (model GC), adjusts horizontally to 8" wider than roller and vertically to 6" above roller; formed steel fixed (model FSG in 2", 4" and 6" heights; fixed channel (model FC); 1-1/2" angle (model GA1-1/2). See Conveyor Accessories.

GALVANIZED ROLLERS: Both tread and pressure rollers available in galvanized steel, model 196G. Specify tread only or both tread and pressure rollers.

192S TREAD ROLLERS: 1.9" dia. x 12 ga. steel tread rollers, model 192S, available in model 192ZPA.

SPEED: Constant speed 15-120 FPM; DC variable speed; AC inverter variable speed. Other constant or variable speeds available.
NOTE: CAPACITY CHANGES WITH SPEED.

MOTORS: Available through 3 HP in TEFC, explosion proof, dirty duty, brake motor, 115/230/1, 575/3, etc.

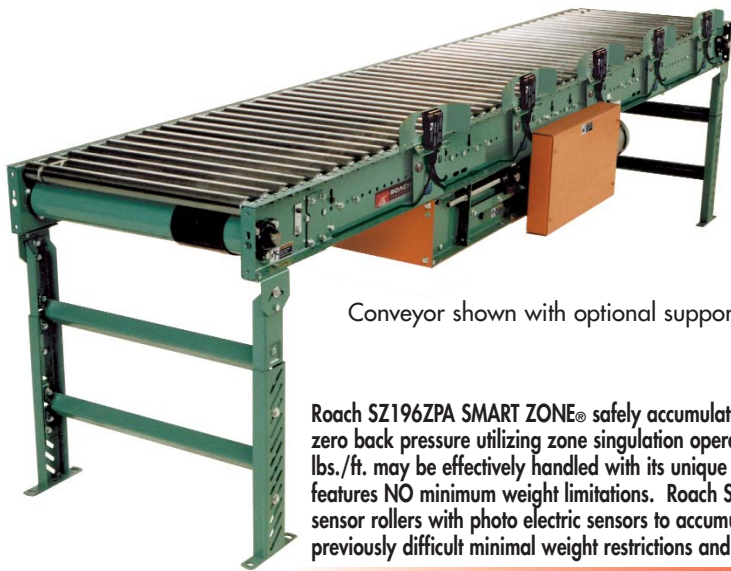
ELECTRICAL CONTROLS: Magnetic starter; One direction manual starter; Momentary start/stop push button station.



ZONE ACTIVATOR SENSOR



MODEL SZ196ZPA SMART ZONE® MEDIUM DUTY ZERO PRESSURE LIVE ROLLER ACCUMULATOR

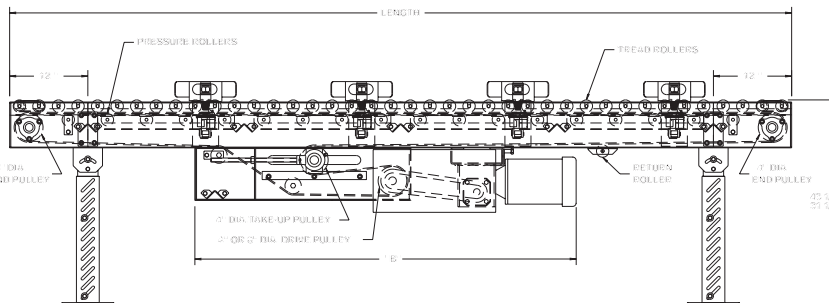
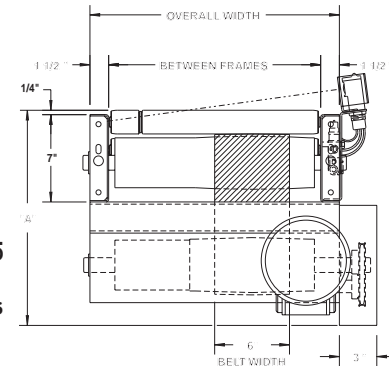


Conveyor shown with optional supports

Roach SZ196ZPA SMART ZONE® safely accumulates packages with zero back pressure utilizing zone singulation operation. Loads up to 125 lbs./ft. may be effectively handled with its unique design. This conveyor features NO minimum weight limitations. Roach SMART ZONE® replaces sensor rollers with photo electric sensors to accumulate products with previously difficult minimal weight restrictions and is easy to install.

SMART ZONE:

Retroreflective photo eyes includes 110V AC or 24V DC power supply.



HP @ 60 FPM	"A" MAX		"B" MAX	
	4" DRV.	8" DRV.	4" DRV.	8" DRV.
1/3	16-5/8"	17-5/8"	58-5/32"	58-5/32"
1/2	16-5/8"	17-5/8"	58-5/32"	58-5/32"
3/4	17"	17-5/8"	58-25/32"	58-25/32"
1	17-1/4"	17-5/8"	59-17/32"	59-17/32"
1-1/2	18-1/8"	18-1/8"	61-21/32"	61-21/32"
2	19"	19"	62-21/32"	62-21/32"

SPECIFICATIONS

TREAD ROLLERS: 1.9" dia. x 16 ga. steel, model 196S.

PRESSURE ROLLERS: 1.9" dia. x 16 ga. steel, model 196S; 8" BF with 6" wide belt.

BELTING: 6" wide black PVC-120 COS.

DRIVE PULLEY: 4" dia. with 1-3/16" dia. shaft or 8" dia. with 1-7/16" dia. shaft, both crowned and fully lagged.

END PULLEY: 4" dia., crowned, with 1-3/16" dia. shaft.

RETURN ROLLERS: 1.9" dia. x 16 ga. steel, model 196S, adjustable.

BEARINGS: All pulley bearings are precision, heavy duty, lubricated, ball bearing units with cast iron housings.

SPEED: 60 FPM, constant.

ACCUMULATION: Zone singulation operation; 2'-0" long zones. 1'-0" of live roller over end plates at each end of conveyor remains "live" during operation (# of zones x zone length + 2' = overall conveyor length). Zones are pneumatically actuated using photo electric sensors.

BED: 7" x 1-1/2" x 12 ga. channel frame slotted for tread rollers to pop-out. When unit is installed at 7'-0" elevation or higher, rollers must be retained in conveyor frame. Specify desired elevation. Bed sections attached with couplings and floor supports.

FRL: Unit is provided with filter, I regulator, lubricator with 1/4" ports.

PNEUMATIC ACTUATION: Maximum air line pressure should not exceed 30 PSI.

SQUARING RODS: Adjustable rods on underside of bed allow frame to be squared for improved belt tracking and are standard on all units over 30'.

MOTOR DRIVE: 1/3 HP, 230/460/3, 60 cycle, ODP right angle gear motor.

ROLLER CHAIN: Drive pulley is driven by No. 50 roller chain for 1-1/2 HP or less and No. 60 chain on larger drives. Chain take-up provided on motor base.

ELECTRICAL CONTROLS: Optional



WARNING

Pop-out rollers should be retained in frame if unit is elevated to 7'-0" and above.

■ 3 week shipment

SPECIFICATION TABLE

50'-0" lengths and under are equipped with 4" dia. drive pulley; over 50'-0" includes 8" dia. drive pulley

CONVEYOR LENGTH			6'	10'	15'	20'	25'	30'	40'	50'	60'	70'	80'	90'	100'
BF	OAW	BELT	Unit weights (lbs.) with 3" roller centers (For other centers, deduct weights below)												
15"	18"	6"	446	553	722	856	1025	1159	1462	1765	2068	2371	2674	2977	3280
19"	22"	6"	478	600	782	934	1123	1270	1600	1934	2274	2595	2925	3255	3590
21"	24"	6"	511	645	847	1015	1217	1385	1755	2125	2495	2865	3235	3605	3975
25"	28"	6"	557	709	939	1132	1358	1543	1963	2370	2780	3193	3608	4020	4458
27"	30"	6"	579	738	977	1176	1415	1614	2052	2490	2928	3366	3804	4242	4680
33"	36"	6"	650	828	1107	1296	1613	2232	2700	3168	3638	4104	4572	5040	5508
39"	42"	6"	717	928	1237	1501	1810	2692	2971	3538	4111	4684	5257	5830	6403

Deduct the following weights (lbs.) for other than 3" centers

TREAD ROLLER CENTERS	15" BF		19" BF		21" BF		25" BF		27" BF		33" BF		39" BF	
	Per 5'	Per 10'	Per 5'	Per 10'	Per 5'	Per 10'	Per 5'	Per 10'	Per 5'	Per 10'	Per 5'	Per 10'	Per 5'	Per 10'
4"	-23	-45	-28	-55	-30	-60	-35	-69	-37	-75	-45	-90	-53	-105
6"	-45	-90	-54	-108	-60	-120	-69	-138	-75	-150	-90	-180	-105	-210

OPTIONAL EQUIPMENT

ACCUMULATION: 30" and 60" zones available in 3" and 6" roller centers; 40" and 60" zones available in 4" roller centers.

SLUG RELEASE: Products may be slug released rather than individual product release in normal zone singulation; accumulation mode will not be disturbed when slug release option utilized.

BELTING: 6" wide black PVC-150; 12" wide PVC-120.

END DRIVE: Mounted underneath conveyor. Minimum possible height is 20" TOR for underneath mounted end drive. Belt take-up required for end drive (if substituting end drive for center drive).

AUXILIARY TAKE-UP: Provides 24" of belt take-up; specify location. See Power Accessories.

FLOOR SUPPORTS: Supports, knee braces, casters and polytier supports available. See Conveyor Accessories.

CEILING HANGERS: 5/8" dia. threaded rod with hardware to attach rods to conveyor. Provides 6' clearance between ceiling and TOR (furnished in place of floor supports). See Conveyor Accessories.

GALVANIZED ROLLERS: Both tread and pressure rollers available in galvanized steel, model 196G. Specify tread only or both tread and pressure rollers.

192S TREAD ROLLERS: 1.9" dia. x 12 ga. steel tread rollers, model 192S, available in model SZ192ZPA SMART ZONE®.

SPEED: Constant speed 15-120 FPM; DC variable speed; AC inverter variable speed. Other constant or variable speeds available. **NOTE: CAPACITY CHANGES WITH SPEED.**

MOTORS: Available through 3 HP in TEFC, explosion proof, dirty duty, brake motor, 115/230/1, 575/3, etc.

DEFUSED SMARTZONE: Photoeyes mounted below tread rollers.



PHOTO SENSOR MOUNT

MODEL SZ251ZPA SMART ZONE® HEAVY DUTY ZERO PRESSURE ACCUMULATOR

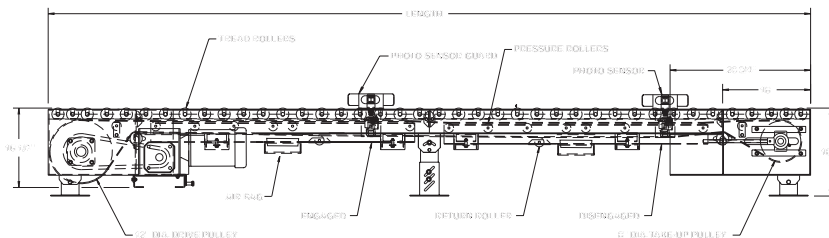
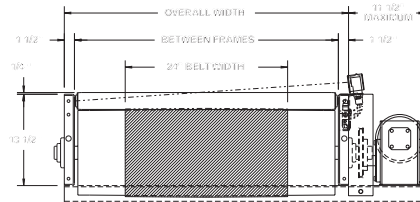


Conveyor shown with optional supports

Model SZ251ZPA SMART ZONE® is a heavy duty zero pressure accumulator, designed to accumulate heavy products, containers and pallets in 5' zones. The Roach design incorporates photo electric sensors--instead of sensor rollers, eliminating many common problems associated with conveying wooden pallets. Products do not touch during accumulation and are singulated individually off of conveyor. Heavy loads weighing up to 3000 lbs. may be safely accumulated with Roach SMART ZONE®.

SMART ZONE:

Retroreflective photo eyes includes
110V AC or 24V DC power supply.



SPECIFICATIONS

TREAD ROLLERS: 2-1/2" dia. x 11 ga. steel, model 251S.

PRESSURE ROLLERS: 1.9" dia. x 16 ga. steel, model 196S; 27" BF for all widths.

RETURN ROLLERS: 1.9" dia. x 16 ga. steel, model 196S, adjustable.

BELTING: 24" wide PVC-120 COS.

SIDE MOUNT END DRIVE: Allows one direction unit operation.

DRIVE PULLEY: 12" dia., with 1-15/16" dia. shaft, crowned and fully lagged.

TAIL PULLEY: 8" dia., crowned, with 1-3/16" dia. shaft.

TAKE-UP: Screw type unit at tail pulley provides 12" belt take-up.

BEARINGS: All pulley bearings are precision, heavy duty, lubricated, ball bearing units with cast iron housings.

BED: 5" x 1-1/2" x 3/16" formed steel channel frame slotted for tread rollers to pop-out. When unit is installed at 7'-0" elevation or higher, rollers must be retained in conveyor. Specify desired elevation. Bed sections are bolted together with butt couplings and floor supports.

SPEED: 35 FPM, constant.

ACCUMULATION: 5'-0" long zones with zone singulation operation. 1'-6" of live roller over end plates at each end of conveyor remains "live" during operation (# of zones x zone length + 3'-0" = overall conveyor length). Zones are pneumatically actuated by using photo electric sensors.

FRL: Unit is provided with filter, regulator and lubricator with 3/8" ports for 60 PSI operational pressure.

MOTOR DRIVE: 1 HP, 230/460/3, 60 cycle, ODP right angle gear motor.

ROLLER CHAIN: No. 60 chain provided at drive pulley. Chain take-up provided on motor base.

ELECTRICAL CONTROLS: Optional.



⚠ WARNING

Pop-out rollers should be retained in frame if unit is elevated to 7'-0" and above.

■ 6 week shipment

SPECIFICATION TABLE

CONVEYOR LENGTH		13'	18'	23'	28'	33'	38'	43'	48'	53'	58'	63'	68'	73'	78'	83'
BF	OAW	Unit weights (lbs.) with 4" roller centers														
39"	42"	1430	1974	2459	2944	3429	3914	4399	4884	5369	5854	6339	6824	7309	7794	8279
43"	46"	1520	2105	2623	3141	3658	4176	4694	5211	5729	6247	6765	7282	7800	8318	8836
51"	54"	1667	2308	2875	3443	4010	4577	5145	5712	6279	6846	7414	7981	8548	9116	9683
57"	60"	1783	2476	3084	3692	4301	4901	5518	6126	6734	7343	7951	8560	9168	9776	10385
		Unit weights (lbs.) with 6" roller centers														
39"	42"	1222	1686	2091	2496	2901	3306	3711	4116	4521	4926	5331	5736	6141	6456	6951
43"	46"	1299	1799	2232	2665	3097	3530	3963	4395	4828	5261	5694	6126	6569	6942	7425
51"	54"	1407	1948	2415	2883	3350	3817	4285	4752	5219	5686	6154	6621	7088	7556	8023
57"	60"	1502	1970	2468	3288	3575	4065	4572	5070	5568	6067	6565	7064	7562	8060	8559

OPTIONAL EQUIPMENT

BELTING: 12" wide PVC-120; 24" wide PVC-150.

DRIVE PULLEY: 8" dia. with 1-7/16" dia. shaft, crowned and fully lagged.

SLUG RELEASE: Products may be slug released rather than individual product release in normal zone singulation; accumulation mode will not be disturbed when slug release option utilized.

FLOOR SUPPORTS: Supports, knee braces, casters and polytier supports available. See Conveyor Accessories.

SPEED: Constant speed 8-120 FPM; DC variable speed; AC inverter variable speed. Other constant or variable speeds available. **NOTE: CAPACITY CHANGES WITH SPEED.**

MOTORS: Available through 3 HP in TEFC, explosion proof, dirty duty, brake motor, 115/230/1, 575/3, etc.

ELECTRICAL CONTROLS: Magnetic starter; One direction manual starter; Momentary start/stop push button station; start/stop push button station.

DEFUSED SMARTZONE: Photoeyes mounted below tread rollers.



PHOTO SENSOR MOUNT



HEAVY DUTY AIR BAG

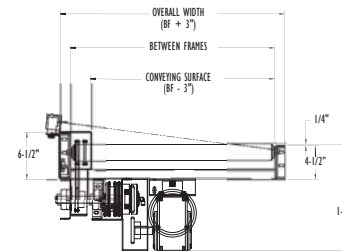
MODEL SZA192CDA MEDIUM DUTY CHAIN DRIVEN ZERO PRESSURE ACCUMULATOR

AIR CLUTCH OPERATED ZONES

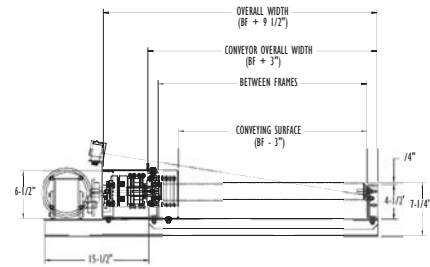


Conveyor shown with optional supports

SZA192CDA SMART ZONE® is a medium duty roll-to-roll chain driven zero pressure accumulator, designed to safely accumulate medium duty loads in 5' zones. Roach SMART ZONE® incorporates photo electric sensors to detect product loads instead of sensor rollers--which eliminates many problems associated with sensor rollers. Products do not touch during accumulation and are singulated individually off of conveyor. SMART ZONE® is easy to install and simple to maintain.



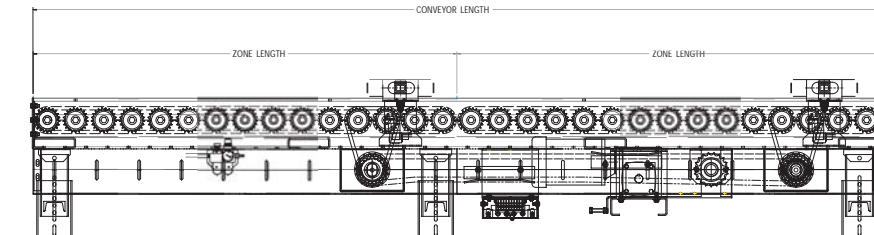
SZA192CDA AIR CLUTCH UNDERNEATH



SZA192CDA AIR CLUTCH SIDEMOUNT

SMART ZONE:

Retroflective photo eyes includes 110V AC or 24V DC power supply.



SPECIFICATIONS

TREAD ROLLERS: 1.9" dia. x 12 ga., model 192S.

CHAIN DRIVE: Roller-to-roller No. 40 roller chain. Zone-to-zone No. 60 roller chain.

CHAIN GUARD: All chains are completely enclosed along the entire length of conveyor.

CENTER DRIVE: Drive either side mounted or underside mounted (specify). Drive shafts are supported by precision, heavy duty, lubricated, ball bearing units.

ROLLER CENTERS: 4" or 6" RC ONLY.

SPEED: 35 FPM, constant.

ACCUMULATION ZONE: 5'-0" zone lengths, zone singulation operation, photo electric sensor controlled zones with air clutch. (60 psi max)

BED: 6-1/2" x 1-1/2" x 10 ga. and 4-1/2" x 1-1/2" x 10 ga. formed steel channel frame. Bed sections are bolted together with butt couplings and floor supports.

BEARINGS: Removable type, heavy duty ball bearings, zinc-plated, grease packed, labyrinth seal.

FRL: Unit is provided with filter, regulator and lubricator with 3/8" ports for 60 PSI operational pressure.

MOTOR DRIVE: 1/3 HP, 230/460/3, 60 cycle, ODP right angle gear motor.

CAPACITY: 300 lbs./ft. up to a maximum of 1200 lb. pallet load.

ELECTRICAL CONTROLS: Optional.



■ 6 week shipment

SPECIFICATION TABLE

CONVEYOR LENGTH		5'	10'	15'	20'	25'	30'	35'	40'	50'	60'	70'	80'	90'	100'
BF	CONV. SURFACE	Unit weights (lbs.) with 4" roller centers													
15"	12"	471	761	1051	1341	1632	1922	2212	2502	3083	3663	4244	4824	5405	5986
21"	18"	511	832	1154	1476	1797	2119	2441	2762	3406	4049	4692	5336	5979	6622
27"	24"	561	922	1284	1646	2006	2369	2728	3093	3816	4539	5262	5977	6706	7435
33"	30"	609	998	1405	1802	2200	2598	2996	3393	4189	4985	5780	6582	7379	8176
39"	36"	648	1075	1502	1929	2357	2784	3211	3638	4493	5347	6202	7056	7915	8774
45"	42"	693	1156	1618	2081	2544	3007	3469	3932	4857	5783	6709	7634	8568	9502
51"	48"	733	1226	1720	2213	2707	3199	3693	4186	5173	6159	7146	8133	9132	10131

		Unit weights (lbs.) with 6" roller centers													
15"	12"	441	711	971	1241	1502	1772	2032	2302	2833	3363	3894	4424	4955	5486
21"	18"	477	772	1061	1356	1644	1939	2227	2522	3106	3680	4272	4856	5439	6022
27"	24"	517	842	1161	1486	1804	2129	2448	2773	3416	4059	4702	5337	5986	6635
33"	30"	548	898	1252	1602	1948	2298	2643	2993	3689	4385	5080	5789	6479	7176
39"	36"	590	965	1334	1709	2079	2454	2823	3198	3943	4687	5432	6176	6925	7674
45"	42"	626	1026	1421	1821	2217	2617	3012	3412	4207	5003	5799	6594	7398	8202
51"	48"	661	1086	1508	1933	2354	2779	3201	3626	4473	5319	6166	7013	7872	8731

OPTIONAL EQUIPMENT

ZONE LENGTHS: 3' through 10' in 4" or 6" increments as per roller centers and zone chain pitch. Frame lengths will vary with zone lengths.

BED: 6-1/2" x 1-1/2" x 7 ga. and 4-1/2" x 1-1/2" x 7 ga. formed steel channel frame.

TREAD ROLLERS: 1.9" dia. x 9 ga. steel, model 199S tread rollers.

FLOOR SUPPORTS: Supports, knee braces, casters and polytier supports available. See Conveyor Accessories.

SIDE MOUNTED CLUTCH: Consult factory for low elevation model SZ192CDAS with side mounted clutch.

SPEED: Constant speed 20-120 FPM; DC variable speed; AC inverter variable speed. Other constant or variable speeds available. Minimum unit speed is 20 FPM for model CDA. **NOTE: CAPACITY CHANGES WITH SPEED.**

MOTORS: Available through 3 HP in TEFC, explosion proof, dirty duty, brake motor, 115/230/1, 575/3, etc.

ELECTRICAL CONTROLS: Magnetic starter; one direction manual starter; limit switch; electric solenoid; hydraulic damper.

DEFUSED SMARTZONE: Photoeyes mounted below tread rollers.



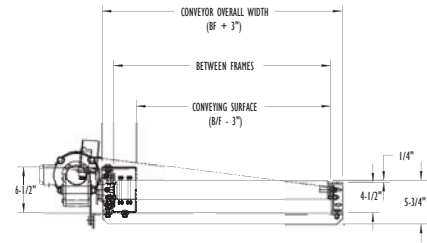
MODEL SZD192CDA MEDIUM DUTY CHAIN DRIVEN ZERO PRESSURE ACCUMULATOR

DRIVE OPERATED ZONES

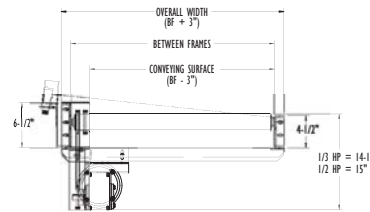


Conveyor shown with optional supports

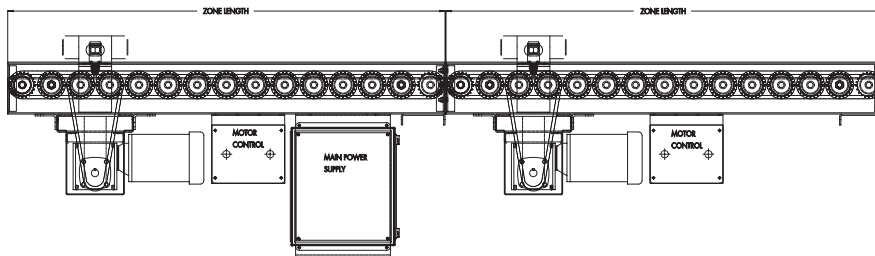
SZD192CDA SMART ZONE® is a medium duty roll-to-roll chain driven zero pressure accumulator, designed to safely accumulate medium duty loads in 5' zones. Roach SMART ZONE® incorporates photo electric sensors to detect product loads instead of sensor rollers--which eliminates many problems associated with sensor rollers. Products do not touch during accumulation and are singulated individually off of conveyor. SMART ZONE® is easy to install and simple to maintain.



SZD192CDA SIDEMOUNT DRIVE



SZD192CDA UNDERNEATH DRIVE



SMART ZONE:

Retroflective photo eyes includes 110V AC or 24V DC power supply.

SPECIFICATIONS

TREAD ROLLERS: 1.9" dia. x 12 ga., model 192S.

CHAIN DRIVE: Roller-to-roller No. 40 roller chain. Zone-to-zone No. 60 roller chain.

CHAIN GUARD: All chains are completely enclosed along the entire length of conveyor.

CENTER DRIVE: Drive either side mounted or underside mounted (specify). Drive shafts are supported by precision, heavy duty, lubricated, ball bearing units.

ROLLER CENTERS: 4" or 6" RC ONLY.

SPEED: 35 FPM, constant.

ACCUMULATION ZONE: 5'-0" zone lengths, zone singulation operation, photo electric sensor controlled zones with separate drives on each zone.

BED: 6-1/2" x 1-1/2" x 10 ga. and 4-1/2" x 1-1/2" x 10 ga. formed steel channel frame. Bed sections are bolted together with butt couplings and floor supports.

BEARINGS: Removable type, heavy duty ball bearings, zinc-plated, grease packed, labyrinth seal.

MOTOR DRIVE: 1/3 HP, 230/460/3, 60 cycle, ODP right angle gear motor.

CAPACITY: 300 lbs./ft. up to a maximum of 1200 lb. pallet load.

ELECTRICAL CONTROLS: Optional.



■ 6 week shipment

SPECIFICATION TABLE

CONVEYOR LENGTH		5'	10'	15'	20'	25'	30'	35'	40'	50'	60'	70'	80'	90'	100'
BF	CONV. SURFACE	Unit weights (lbs.) with 4" roller centers													
15"	12"	471	761	1051	1341	1632	1922	2212	2502	3083	3663	4244	4824	5405	5986
21"	18"	511	832	1154	1476	1797	2119	2441	2762	3406	4049	4692	5336	5979	6622
27"	24"	561	922	1284	1646	2006	2369	2728	3093	3816	4539	5262	5977	6706	7435
33"	30"	609	998	1405	1802	2200	2598	2996	3393	4189	4985	5780	6582	7379	8176
39"	36"	648	1075	1502	1929	2357	2784	3211	3638	4493	5347	6202	7056	7915	8774
45"	42"	693	1156	1618	2081	2544	3007	3469	3932	4857	5783	6709	7634	8568	9502
51"	48"	733	1226	1720	2213	2707	3199	3693	4186	5173	6159	7146	8133	9132	10131

		Unit weights (lbs.) with 6" roller centers													
15"	12"	441	711	971	1241	1502	1772	2032	2302	2833	3363	3894	4424	4955	5486
21"	18"	477	772	1061	1356	1644	1939	2227	2522	3106	3680	4272	4856	5439	6022
27"	24"	517	842	1161	1486	1804	2129	2448	2773	3416	4059	4702	5337	5986	6635
33"	30"	548	898	1252	1602	1948	2298	2643	2993	3689	4385	5080	5789	6479	7176
39"	36"	590	965	1334	1709	2079	2454	2823	3198	3943	4687	5432	6176	6925	7674
45"	42"	626	1026	1421	1821	2217	2617	3012	3412	4207	5003	5799	6594	7398	8202
51"	48"	661	1086	1508	1933	2354	2779	3201	3626	4473	5319	6166	7013	7872	8731

OPTIONAL EQUIPMENT

ZONE LENGTHS: 3' through 10' in 4" or 6" increments as per roller centers and zone chain pitch. Frame lengths will vary with zone lengths.

BED: 6-1/2" x 1-1/2" x 7 ga. and 4-1/2" x 1-1/2" x 7 ga. formed steel channel frame.

TREAD ROLLERS: 1.9" dia. x 9 ga. steel, model 199S tread rollers.

FLOOR SUPPORTS: Supports, knee braces, casters and polytier supports available. See Conveyor Accessories.

SPEED: Constant speed 20-120 FPM; DC variable speed; AC inverter variable speed. Other constant or variable speeds available. Minimum unit speed is 20 FPM for model CDA. **NOTE: CAPACITY CHANGES WITH SPEED.**

MOTORS: Available through 3 HP in TEFC, explosion proof, dirty duty, brake motor, 115/230/1, 575/3, etc.

ELECTRICAL CONTROLS: Magnetic starter; one direction manual starter; limit switch; electric solenoid; hydraulic damper.

DEFUSED SMARTZONE: Photoeyes mounted below tread rollers.



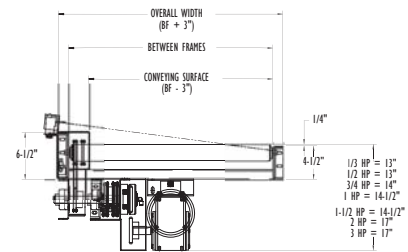
MODEL SZA251CDA HEAVY DUTY CHAIN DRIVEN ZERO PRESSURE ACCUMULATOR

AIR CLUTCH OPERATED ZONES

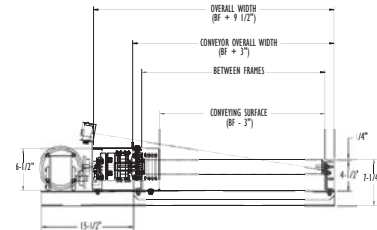


Conveyor shown with optional supports

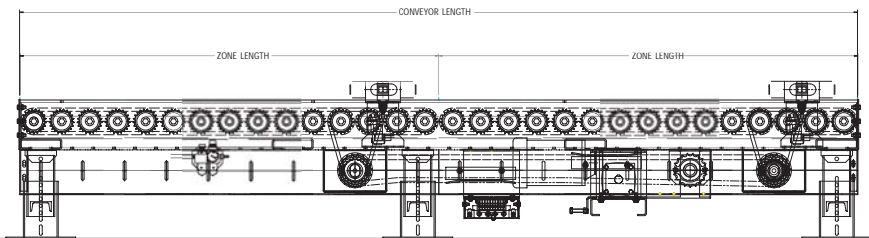
SZA251CDA SMART ZONE® is a heavy duty roll-to-roll chain driven zero pressure accumulator, designed to safely accumulate heavy products such as castings, drums, containers and heavy pallet loads in 5' zones. The Roach design incorporates photo electric sensors--instead of sensor rollers--which eliminates many of the problems associated with conveying wooden pallets. Products do not touch during accumulation and are singulated individually off of conveyor. SMART ZONE® is easy to install and simple to maintain.



SZA192CDA AIR CLUTCH UNDERNEATH



SZA192CDA AIR CLUTCH SIDEMOUNT



SMART ZONE:

Retroflective photo eyes includes
110V AC or 24V DC power supply.

SPECIFICATIONS

TREAD ROLLERS: 2-1/2" dia. x 11 ga. steel, model 251S.

CHAIN DRIVE: Roller-to-roller No. 40 roller chain. Zone-to-zone No. 60 roller chain.

CENTER DRIVE: Drive either side mounted or underside mounted (specify). Drive shafts are supported by precision, heavy duty, lubricated, ball bearing units.

ROLLER CENTERS: 4" or 6" ONLY.

BED: 7" x 1-1/2" x 7 ga. and 5" x 1-1/2" x 7 ga. formed steel channel frame. Bed sections bolted together with butt couplings and floor supports.

ACCUMULATION ZONE: 5'-0" zone lengths, zone singulation operation, photo electric sensor controlled zones with air clutch. (60 psi max)

SPEED: 35 FPM, constant.

CHAIN GUARD: Chains are completely enclosed along entire length of conveyor.

BEARINGS: Removable type, heavy duty ball bearings, zinc-plated, grease packed, labyrinth seal.

FRL: Unit is provided with filter, regulator and lubricator with 3/8" ports for 60 PSI operational pressure.

MOTOR DRIVE: 3/4 HP, 230/460/3, 60 cycle, ODP right angle gear motor.

CAPACITY: 1000 lbs./ft. up to a maximum of 3000 lb. pallet.

ELECTRICAL CONTROLS: Optional.



■ 6 week shipment

SPECIFICATION TABLE

CONVEYOR LENGTH		10'	20'	30'	40'	50'	60'	70'	80'	90'	100'
BF	CONV. SURFACE	Unit weights (lbs.) with 4" roller centers									
15"	12"	869	1557	2246	2934	3623	4311	5000	5688	6377	7066
21"	18"	958	1728	2497	3266	4036	4805	5574	6344	7113	7882
27"	24"	1063	1926	2789	3653	4516	5379	6242	7105	7975	8845
33"	30"	1151	2108	3057	4005	4954	5903	6851	7806	8756	9706
39"	36"	1246	2271	3297	4322	5348	6373	7399	8424	9454	10484
45"	42"	1342	2453	3565	4676	5787	6899	8011	9122	10242	11362
51"	48"	1427	2615	3802	4990	6178	7365	8553	9741	10941	12141
54"	51"	1475	2661	3936	5167	6398	7628	8859	10090	11315	12540
57"	54"	1523	2707	4070	5344	6618	7891	9165	10439	11689	12939
63"	60"	1620	2980	4339	5699	7059	8418	9778	11138	12508	13878

Unit weights (lbs.) with 6" roller centers

15"	12"	811	1441	2073	2701	3331	3961	4591	5221	5851	6481
21"	18"	887	1587	2290	2993	3696	4399	5003	5707	6411	7117
27"	24"	963	1726	2489	3253	4016	4779	5542	6305	7078	7851
33"	30"	1039	1868	2697	3525	4354	5183	6011	6840	7674	8508
39"	36"	1116	2011	2907	3802	4698	5593	6489	7384	8288	9192
45"	42"	1192	2153	3115	4076	5037	5999	6961	7922	8896	9870
51"	48"	1267	2295	3322	4350	5308	6405	7433	8461	9495	10529
54"	51"	1305	2321	3407	4487	5513	6608	7669	8730	9809	10888
57"	54"	1343	2347	3530	4624	5718	6811	7905	8999	10123	11247
63"	60"	1420	2550	3739	4899	6051	7218	8378	9538	10732	11926

OPTIONAL EQUIPMENT

ZONE LENGTHS: 3' through 10' in 4" or 6" increments as per roller centers and zone chain pitch. Frame lengths will vary with zone lengths.

BED: 7" x 9.8 lbs./ft. and 5" x 6.7 lbs./ft. structural frames.

TREAD ROLLERS: 2-9/16" x 7 ga. steel, model 297S tread rollers.

FLOOR SUPPORTS: Supports, knee braces, casters and polytier supports available. See Conveyor Accessories.

SPEED: Constant speed 20-120 FPM; DC variable speed; AC inverter variable speed. Other constant or variable speeds available. Minimum unit speed is 20 FPM for model CDA. **NOTE: CAPACITY CHANGES WITH SPEED.**

MOTORS: Available through 3 HP in TEFC, explosion proof, dirty duty, brake motor, 115/230/1, 575/3, etc.

ELECTRICAL CONTROLS: Magnetic starter; one direction manual starter; limit switch; electric solenoid; hydraulic damper.

DEFUSED SMARTZONE: Photoeyes mounted below tread rollers.



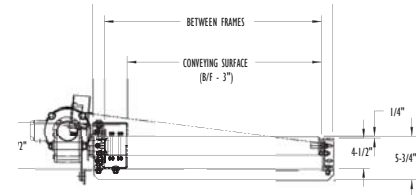
MODEL SZD251CDA HEAVY DUTY CHAIN DRIVEN ZERO PRESSURE ACCUMULATOR

DRIVE OPERATED ZONES

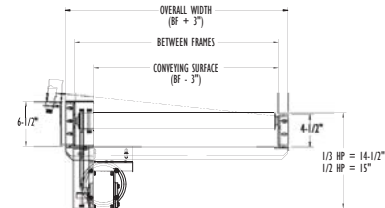


Conveyor shown with optional supports

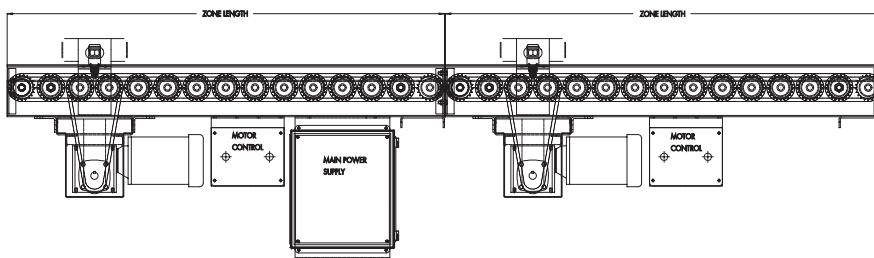
SZD251CDA SMART ZONE® is a heavy duty roll-to-roll chain driven zero pressure accumulator, designed to safely accumulate heavy products such as castings, drums, containers and heavy pallet loads in 5' zones. The Roach design incorporates photo electric sensors--instead of sensor rollers--which eliminates many of the problems associated with conveying wooden pallets. Products do not touch during accumulation and are singulated individually off of conveyor. SMART ZONE® is easy to install and simple to maintain.



SZD192CDA SIDEMOUNT DRIVE



SZD192CDA UNDERNEATH DRIVE



SMART ZONE:

Retroreflective photo eyes includes 110V AC or 24V DC power supply.

SPECIFICATIONS

TREAD ROLLERS: 2-1/2" dia. x 11 ga. steel, model 251S.

CHAIN DRIVE: Roller-to-roller No. 40 roller chain. Zone-to-zone No. 60 roller chain.

CENTER DRIVE: Drive either side mounted or underside mounted (specify). Drive shafts are supported by precision, heavy duty, lubricated, ball bearing units.

ROLLER CENTERS: 4" or 6" ONLY.

BED: 7" x 1-1/2" x 7 ga. and 5" x 1-1/2" x 7 ga. formed steel channel frame. Bed sections bolted together with butt couplings and floor supports.

ACCUMULATION ZONE: 5'-0" zone lengths, zone singulation operation, photo electric sensor controlled zones with separate drives on each zone.

SPEED: 35 FPM, constant.

CHAIN GUARD: Chains are completely enclosed along entire length of conveyor.

BEARINGS: Removable type, heavy duty ball bearings, zinc-plated, grease packed, labyrinth seal.

MOTOR DRIVE: 1/2 HP, 230/460/3, 60 cycle, ODP right angle gear motor.

CAPACITY: 1000 lbs./ft. up to a maximum of 4000 lb. pallet.

ELECTRICAL CONTROLS: Optional.



■ 6 week shipment

SPECIFICATION TABLE

CONVEYOR LENGTH		10'	20'	30'	40'	50'	60'	70'	80'	90'	100'
BF	CONV. SURFACE	Unit weights (lbs.) with 4" roller centers									
15"	12"	869	1557	2246	2934	3623	4311	5000	5688	6377	7066
21"	18"	958	1728	2497	3266	4036	4805	5574	6344	7113	7882
27"	24"	1063	1926	2789	3653	4516	5379	6242	7105	7975	8845
33"	30"	1151	2108	3057	4005	4954	5903	6851	7806	8756	9706
39"	36"	1246	2271	3297	4322	5348	6373	7399	8424	9454	10484
45"	42"	1342	2453	3565	4676	5787	6899	8011	9122	10242	11362
51"	48"	1427	2615	3802	4990	6178	7365	8553	9741	10941	12141
54"	51"	1475	2661	3936	5167	6398	7628	8859	10090	11315	12540
57"	54"	1523	2707	4070	5344	6618	7891	9165	10439	11689	12939
63"	60"	1620	2980	4339	5699	7059	8418	9778	11138	12508	13878

Unit weights (lbs.) with 6" roller centers

15"	12"	811	1441	2073	2701	3331	3961	4591	5221	5851	6481
21"	18"	887	1587	2290	2993	3696	4399	5003	5707	6411	7117
27"	24"	963	1726	2489	3253	4016	4779	5542	6305	7078	7851
33"	30"	1039	1868	2697	3525	4354	5183	6011	6840	7674	8508
39"	36"	1116	2011	2907	3802	4698	5593	6489	7384	8288	9192
45"	42"	1192	2153	3115	4076	5037	5999	6961	7922	8896	9870
51"	48"	1267	2295	3322	4350	5308	6405	7433	8461	9495	10529
54"	51"	1305	2321	3407	4487	5513	6608	7669	8730	9809	10888
57"	54"	1343	2347	3530	4624	5718	6811	7905	8999	10123	11247
63"	60"	1420	2550	3739	4899	6051	7218	8378	9538	10732	11926

OPTIONAL EQUIPMENT

ZONE LENGTHS: 3' through 10' in 4" or 6" increments as per roller centers and zone chain pitch. Frame lengths will vary with zone lengths.

BED: 7" x 9.8 lbs./ft. and 5" x 6.7 lbs./ft. structural frames.

TREAD ROLLERS: 2-9/16" x 7 ga. steel, model 297S tread rollers.

FLOOR SUPPORTS: Supports, knee braces, casters and polytier supports available. See Conveyor Accessories.

SPEED: Constant speed 20-120 FPM; DC variable speed; AC inverter variable speed. Other constant or variable speeds available. Minimum unit speed is 20 FPM for model CDA. **NOTE: CAPACITY CHANGES WITH SPEED.**

MOTORS: Available through 3 HP in TEFC, explosion proof, dirty duty, brake motor, 115/230/1, 575/3, etc.

ELECTRICAL CONTROLS: Magnetic starter; one direction manual starter; limit switch; electric solenoid; hydraulic damper.

DEFUSED SMARTZONE: Photoeyes mounted below tread rollers.

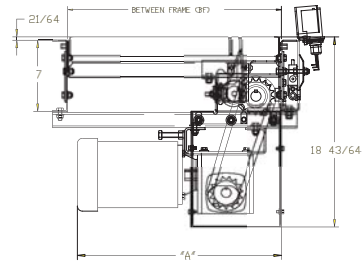


MODEL SZ796LSZ W/PHOTOEYE CONTROLLED SMART ZONE® LINE SHAFT ZERO PRESSURE ACCUMULATOR

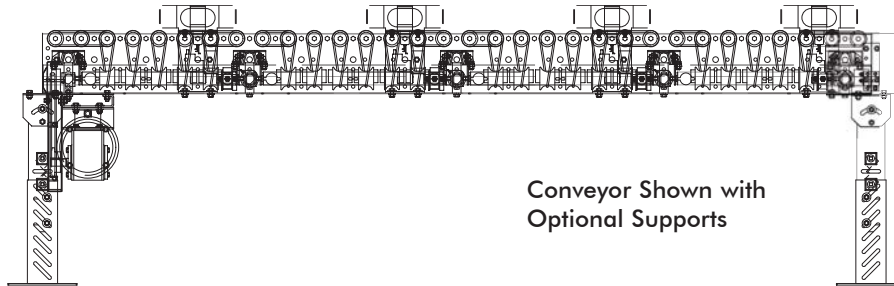


Conveyor shown with optional supports

SZ796LSZ SMART ZONE® quietly accumulates a wide variety of product sizes and features NO minimum weight limitations. SMART ZONE® eliminates sensor rollers and replaces with photo electric sensors to accumulate products with previously difficult minimal weight restrictions. This zero pressure line shaft driven accumulator is ideal for numerous light to medium duty applications since curves, spurs and other modules may be driven by a single drive.



SMART ZONE:
Retroreflective photo eyes includes 110V AC or 24V DC power supply.



Conveyor Shown with Optional Supports

HP @ 60 FPM	"A" MAX.
1/3, 1/2	21"
3/4, 1	22"
1-1/2, 2	23"

SPECIFICATIONS

TREAD ROLLERS: 1.9" dia. x 16 ga. steel, model 196S grooved.

DRIVE BELT: 3/16" dia., polyurethane belts. Nominal 15 lbs. per roller drive.

DRIVE SHAFT: 1" dia. C1018 cold rolled steel shaft.

COUPLINGS: Couplings located both ends (type "A"), one end only (type "B" or "C") or none (type "D"). See 'line shaft coupling chart' opposite page, and specify.

CENTER DRIVE: Located approximately 16-1/2" from end of bed section on 4" RC; 18" on 3" and 6" RC.

SPEED: 60 FPM, constant.

ACCUMULATION: Zone singulation operation; 2'-0" zone length; zones are pneumatically actuated using photo electric sensors.

BEARINGS: All bearings are precision, lubricated, ball bearing units with composite housings.

BED: 7" x 1-1/2" x 12 ga. formed steel channel frame. Bed sections attached with splice plates and floor supports.

FRL: Unit is provided with filter, regulator, lubricator with 1/4" ports.

PNEUMATIC ACTUATION: Maximum air line pressure should not exceed 30 PSI.

MOTOR DRIVE: 1/3 HP, 230/460/3, 60 cycle, ODP right angle gear motor.

ROLLER CHAIN: Drive shaft is driven by No. 50 chain. Chain take-up provided on motor base.

CAPACITY: See technical section for load capacity rating.

ELECTRICAL CONTROLS: Optional.



■ 3 week shipment

SPECIFICATION TABLE

CONVEYOR LENGTH		5'	10'	15'	20'	25'	30'	40'	50'	60'	70'	80'	90'	100'
BF	OAW	Unit weights (lbs.) with 3" roller centers (For other centers, deduct weights below)												
15"	18"	362	551	740	928	1117	1306	1683	2061	2438	2816	3193	3571	3948
19"	21"	382	589	796	1003	1210	1417	1831	2244	2658	3072	3486	3900	4313
21"	24"	393	612	831	1049	1268	1486	1923	2360	2797	3234	3671	4108	4545
25"	28"	405	646	888	1130	1372	1613	2096	2580	3063	3546	4029	4513	4996
27"	30"	425	672	925	1178	1431	1684	2191	2697	3203	3710	4216	4722	5229
33"	36"	437	724	1012	1300	1588	1876	2452	3027	3603	4179	4755	5331	5906
39"	42"	468	788	1146	1504	1792	2079	2724	3369	4015	4660	5305	5950	6595

Deduct the following weights (lbs.) for other than 3" centers

TREAD ROLLER CENTERS	15" BF		19" BF		21" BF		25" BF		27" BF		33" BF		39" BF	
	Per 5'	Per 10'	Per 5'	Per 10'	Per 5'	Per 10'	Per 5'	Per 10'	Per 5'	Per 10'	Per 5'	Per 10'	Per 5'	Per 10'
4"	-14	-28	-17	-34	-19	-37	-21	-42	-23	-45	-27	-53	-31	-62
6"	-18	-36	-34	-68	-37	-74	-42	-84	-45	-90	-53	-106	-62	-124

OPTIONAL EQUIPMENT

SIDE MOUNTED DRIVE: Provides overall conveyor height of 10".

ACCUMULATION ZONES: 18" and 30" long zones available, depending on roller centers.

FLOOR SUPPORTS: Supports, knee braces, casters and polytier supports available. See Conveyor Accessories.

CEILING HANGERS: 5/8" dia. threaded rod with hardware to attach rods to conveyor. Provides 6' clearance between ceiling and TOR (furnished in place of floor supports). See Conveyor Accessories.

CONVEYOR SPEED: Constant speed 15-120 FPM; DC variable speed; AC inverter variable speed. MINIMUM operating speed for line shaft conveyor is 15 FPM.

SLUG RELEASE: Products may be slug released rather than individual product release in normal zone singulation; accumulation mode will not be disturbed when slug release option utilized.

GALVANIZED ROLLERS: Tread rollers available in galvanized steel, model 196G grooved.

MOTORS: Available through 2 HP in TEFC, explosion proof, dirty duty, 115/230/1, 575/3, etc.

DEFUSED SMARTZONE: Photoeyes mounted below tread rollers.

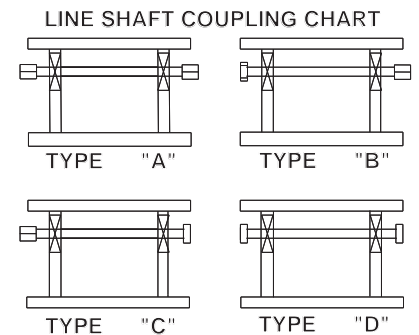


PHOTO SENSOR MOUNT



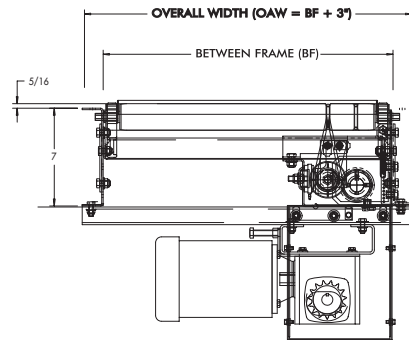
LINE SHAFT BEARING HOUSING

MODEL 796LSZ W/SENSOR ROLLERS LINE SHAFT ZERO PRESSURE ACCUMULATOR

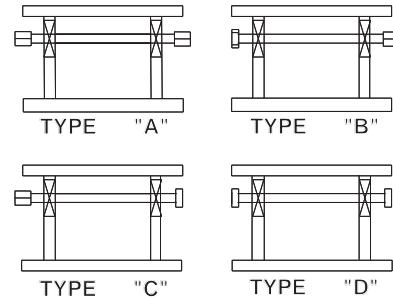


Conveyor shown with optional supports

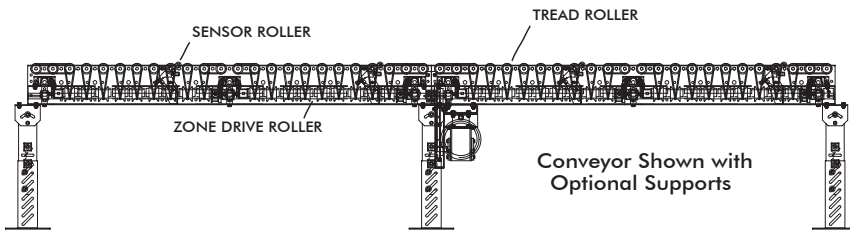
Model 796LSZ is one of the most popular accumulators in the unit handling industry. This zero pressure line shaft driven accumulator is ideal for numerous light to medium duty applications. Curves, spurs and other line shaft modules may be driven by a SINGLE drive.



LINE SHAFT COUPLING CHART



HP @ 60 FPM	"A" MAX.
1/3, 1/2	21"
3/4, 1	22"
1-1/2, 2	23"



Conveyor Shown with Optional Supports

SPECIFICATIONS

TREAD ROLLERS: 1.9" dia. x 16 ga. steel, model 196S grooved.

DRIVE BELT: 3/16" dia., polyurethane belts. Nominal 15 lbs. per roller drive.

DRIVE SHAFT: 1" dia. C1018 cold rolled steel shaft.

COUPLINGS: Couplings located both ends (type "A"), one end only (type "B" or "C") or none (type "D"). See 'line shaft coupling chart' and specify.

CENTER DRIVE: Located approximately 16-1/2" from end of bed section on 4" RC; 18" on 3" and 6" RC.

SPEED: 60 FPM, constant.

ACCUMULATION ZONE: 2'-0" zone length, pneumatically actuated, zone singulation operation.

BEARINGS: All bearings are precision, lubricated, ball bearing units with composite housings.

BED: 7" x 1-1/2" x 12 ga. formed steel channel frame. Bed sections attached with splice plates and floor supports.

FRL: Unit is provided with filter, regulator, lubricator with 1/4" ports.

PNEUMATIC ACTUATION: Maximum air line pressure should not exceed 30 PSI.

MOTOR DRIVE: 1/3 HP, 230/460/3, 60 cycle, ODP right angle gear motor.

ROLLER CHAIN: Drive shaft is driven by No. 50 chain. Chain take-up provided on motor base.

CAPACITY: See technical section for load capacity rating.

ELECTRICAL CONTROLS: Optional.



■ 3 week shipment

SPECIFICATION TABLE

CONVEYOR LENGTH		5'	10'	15'	20'	25'	30'	40'	50'	60'	70'	80'	90'	100'
BF	OAW	Unit weights (lbs.) with 3" roller centers (For other centers, deduct weights below)												
15"	18"	362	551	740	928	1117	1306	1683	2061	2438	2816	3193	3571	3948
19"	21"	382	589	796	1003	1210	1417	1831	2244	2658	3072	3486	3900	4313
21"	24"	393	612	831	1049	1268	1486	1923	2360	2797	3234	3671	4108	4545
25"	28"	405	646	888	1130	1372	1613	2096	2580	3063	3546	4029	4513	4996
27"	30"	425	672	925	1178	1431	1684	2191	2697	3203	3710	4216	4722	5229
33"	36"	437	724	1012	1300	1588	1876	2452	3027	3603	4179	4755	5331	5906
39"	42"	468	788	1146	1504	1792	2079	2724	3369	4015	4660	5305	5950	6595

Deduct the following weights (lbs.) for other than 3" centers

TREAD ROLLER CENTERS	15" BF		19" BF		21" BF		25" BF		27" BF		33" BF		39" BF	
	Per 5'	Per 10'	Per 5'	Per 10'	Per 5'	Per 10'	Per 5'	Per 10'	Per 5'	Per 10'	Per 5'	Per 10'	Per 5'	Per 10'
4"	-14	-28	-17	-34	-19	-37	-21	-42	-23	-45	-27	-53	-31	-62
6"	-18	-36	-34	-68	-37	-74	-42	-84	-45	-90	-53	-106	-62	-124

OPTIONAL EQUIPMENT

SIDE MOUNTED DRIVE: Provides overall conveyor height of 10".

ACCUMULATION ZONES: 18" and 30" long zones available, depending on roller centers.

ACCUMULATION CONTROLS: For actuation of zones using photo electric sensors, see pages 70-71 for model SZ796LSA SMART ZONE®.

GALVANIZED ROLLERS: Tread rollers available in galvanized steel, model 196G.

FLOOR SUPPORTS: Other height supports, knee braces, casters, polytier supports and ceiling hangers available. See pg. 125-129.

CONVEYOR SPEED: Constant speed 15-120 FPM; DC variable speed; AC inverter variable speed. MINIMUM operating speed for line shaft conveyor is 15 FPM.

MOTORS: Available through 2 HP in TEFC, explosion proof, dirty duty, 115/230/1, 575/3, etc.

GUARD RAILS: 1-3/4" x 1" formed channel (model GC), adjusts horizontally to 8" wider than roller and vertically to 6" above roller; formed steel fixed (model FSG in 2", 4" and 6" heights; fixed channel (model FC); 1-1/2" angle (model GA1-1/2). See Conveyor Accessories.

ELECTRICAL CONTROLS: One direction magnetic or manual starter; momentary start/stop push button station. Mounting and pre-wiring for units up to 12' long.

PNEUMATIC FLOW CHART

NOTE: Pneumatic flow must be specified as shown in diagram below

